

RLDT: Aggiornamento al 31.12.97

Registro Lombardo Dialisi e Trapianto



In Dialisi al 31.12 : **5637 (633 pmp)**

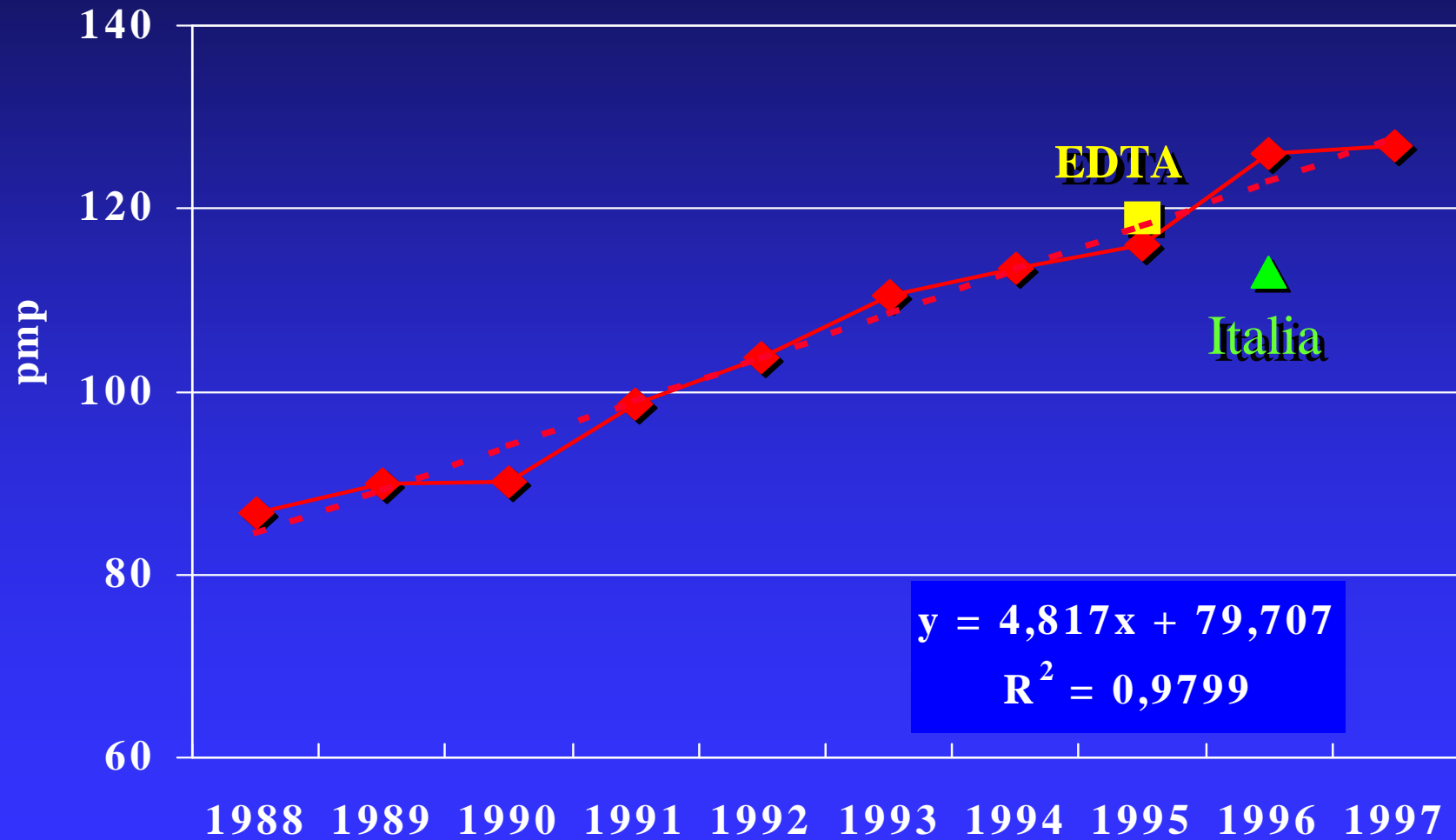
Con Trapianto al 31.12* : **2395 (269 pmp)**

* : pazienti in carico a Centri Lombardi

Nuovi ingressi nel 97 : **1130 (127 pmp)**

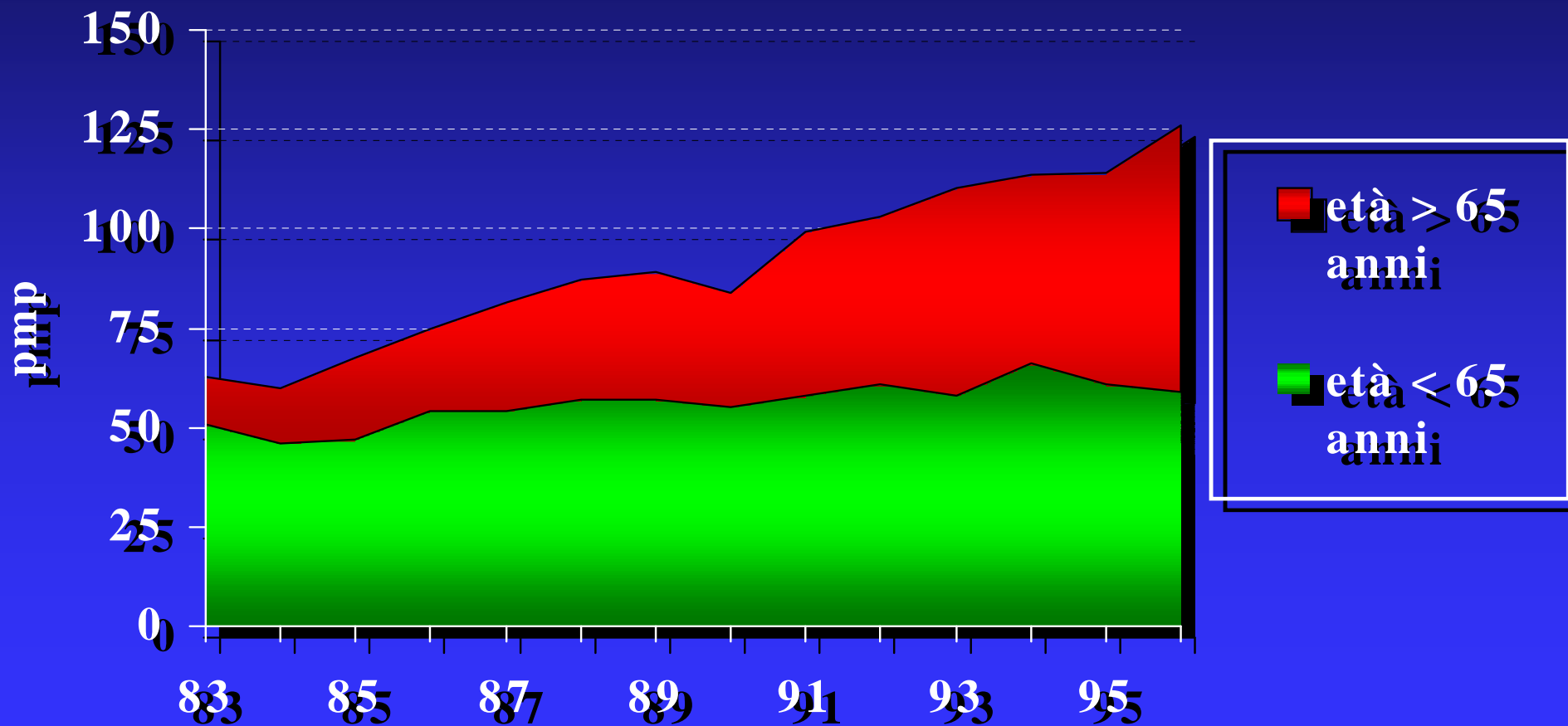
Incidenza

Registro Lombardo Dialisi e Trapianto



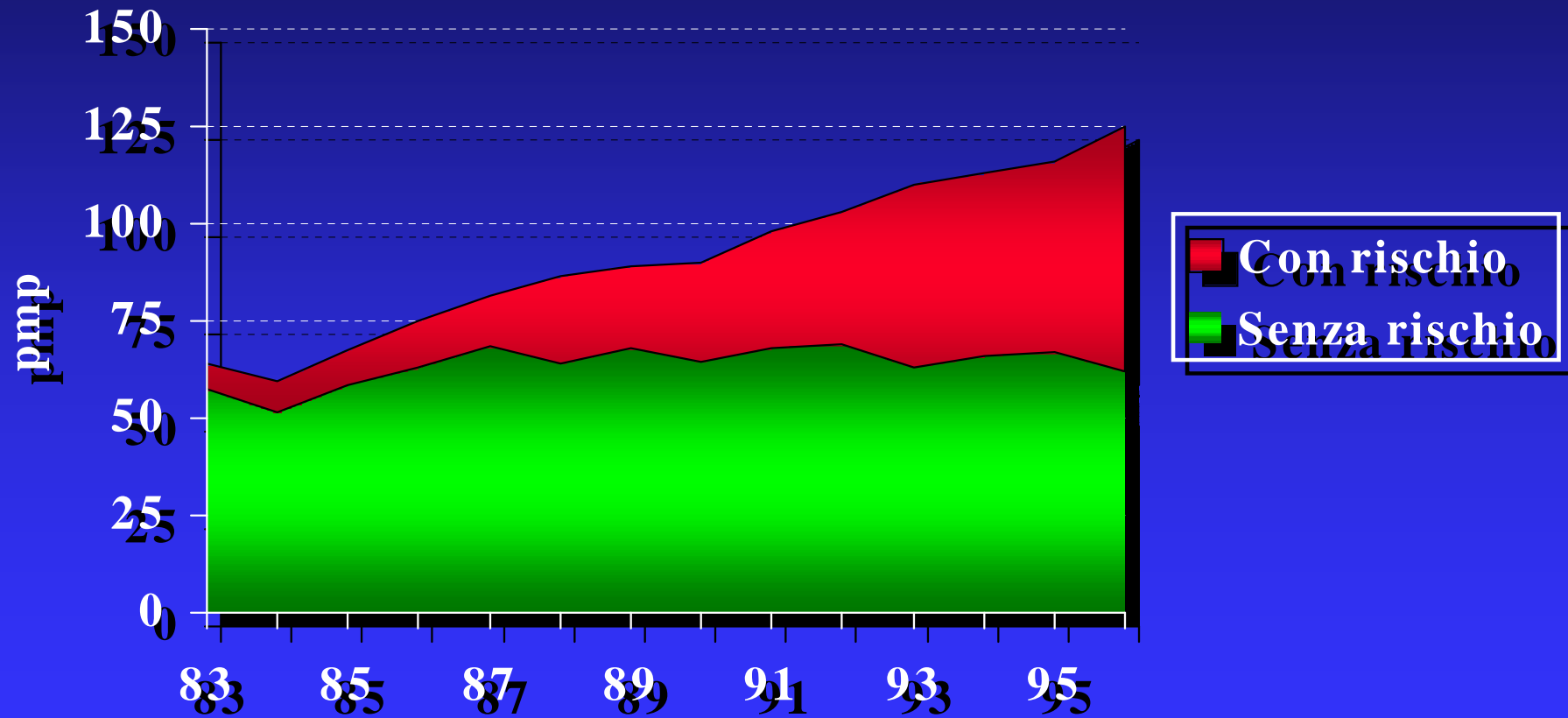
Incidenza

Lombardy Registry



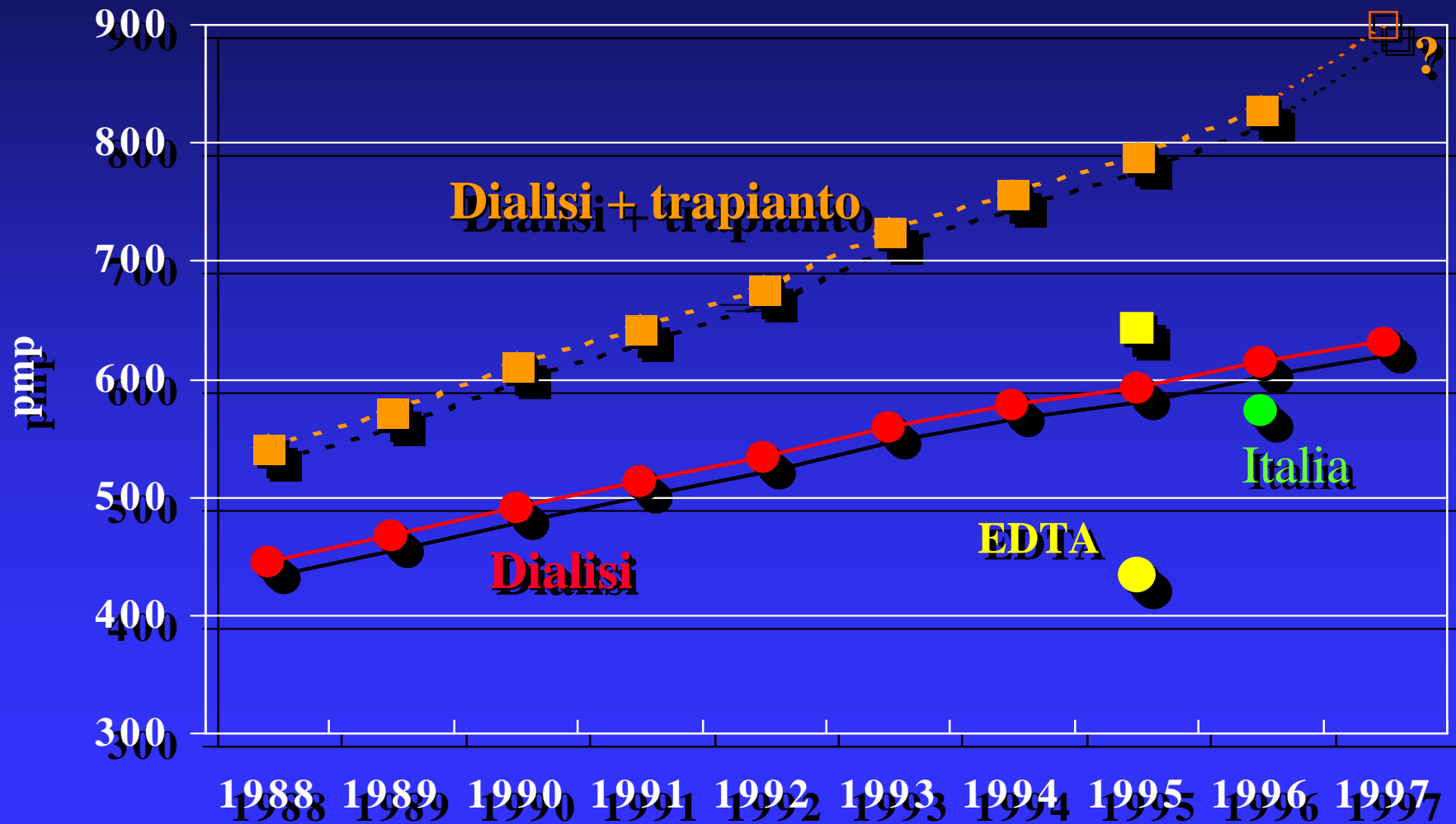
Incidenza

Lombardy Registry



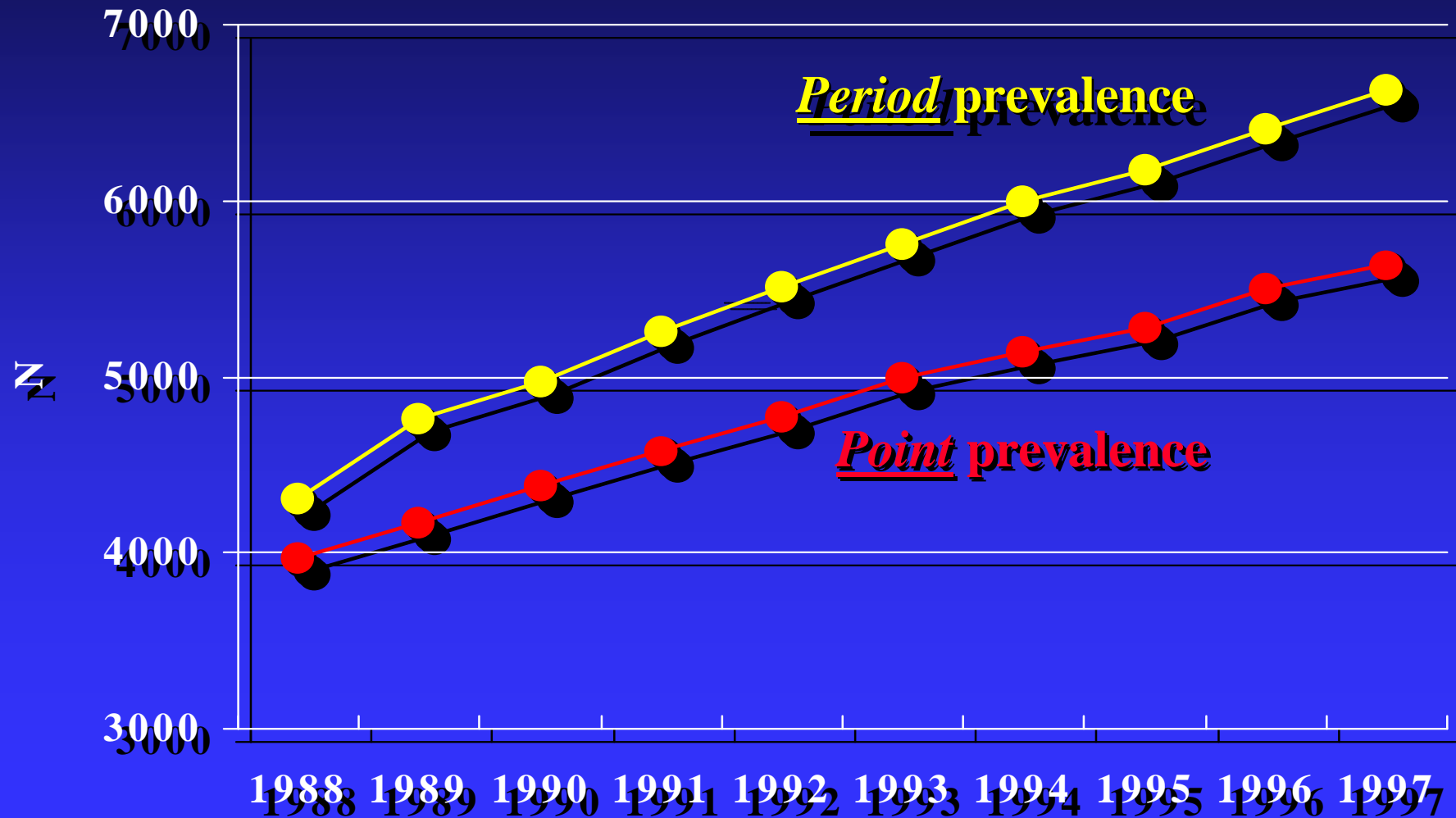
Prevalenza

Registro Lombardo Dialisi e Trapianto



Prevalenza : pazienti in dialisi

Registro Lombardo Dialisi e Trapianto



Programmi di trattamento

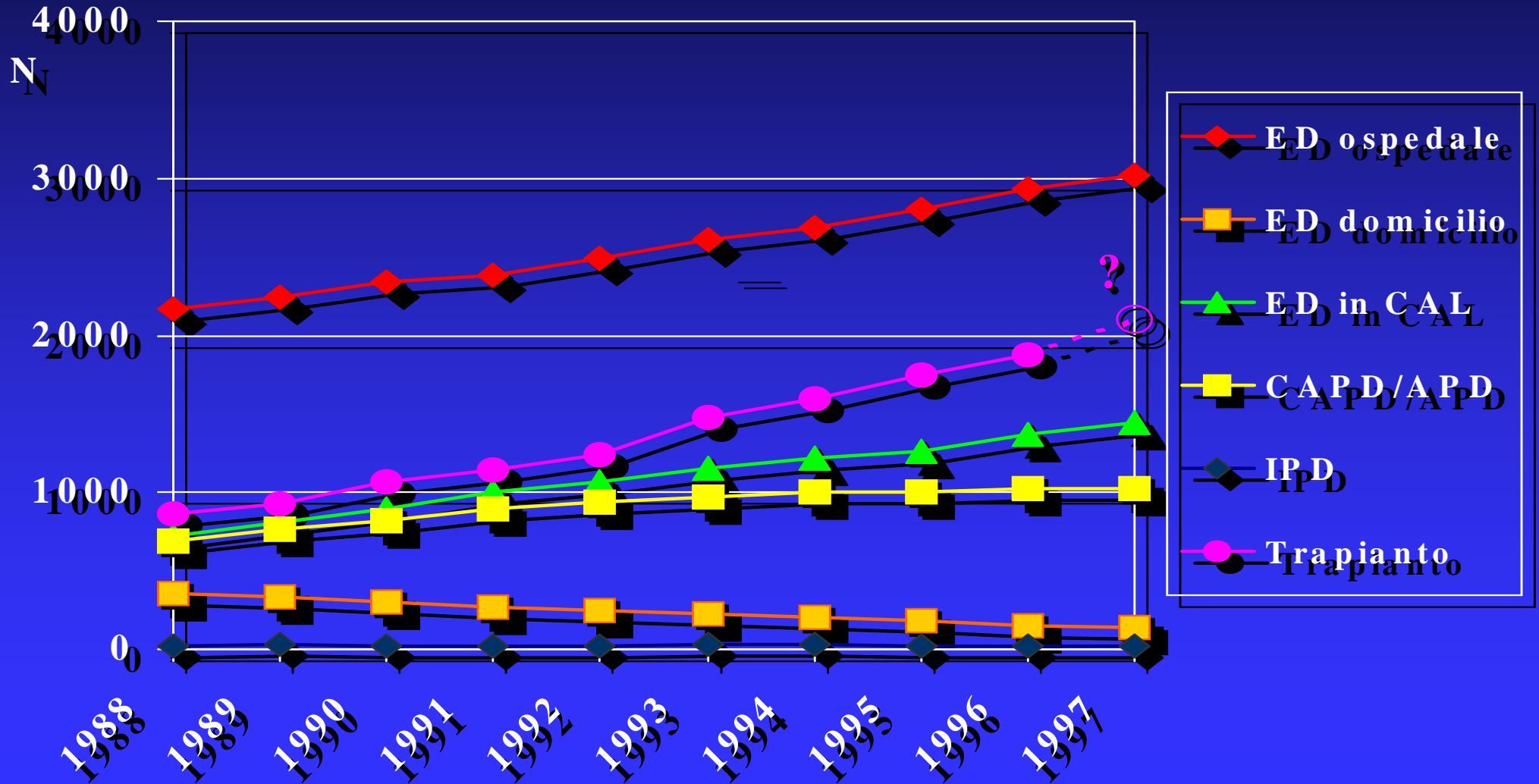
Registro Lombardo Dialisi e Trapianto



	<u>N</u>	<u>%</u>
ED ospedaliera	3023	53.6
ED domiciliare	136	2.4
ED in CAL	1441	25.6
TOTALE ED	4600	81.6
CAPD	877	15.6
CCPD/APD	142	2.5
IPD	18	0.3
TOTALE DP	1037	18.4

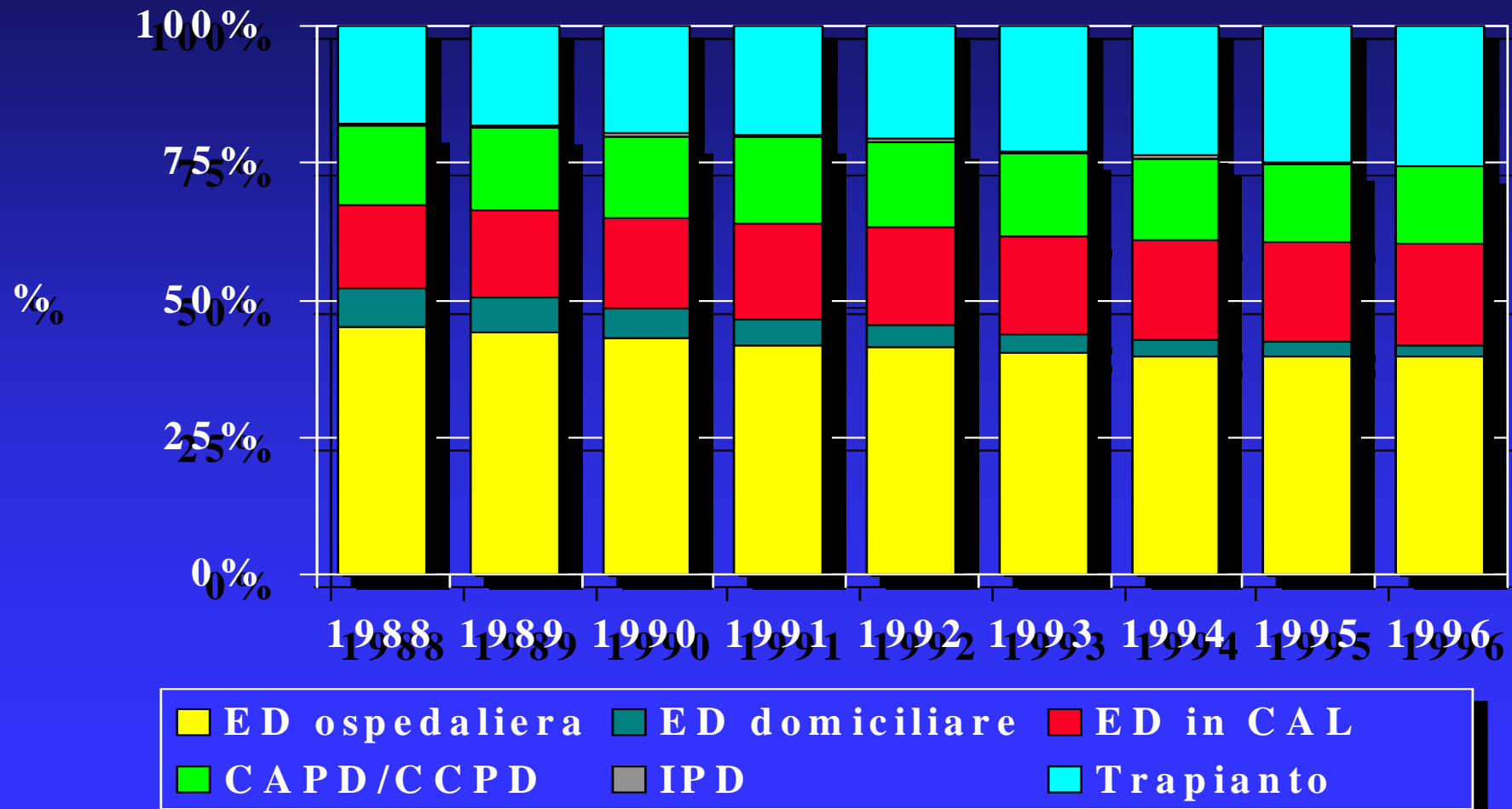
Programmi di trattamento

Registro Lombardo Dialisi e Trapianto



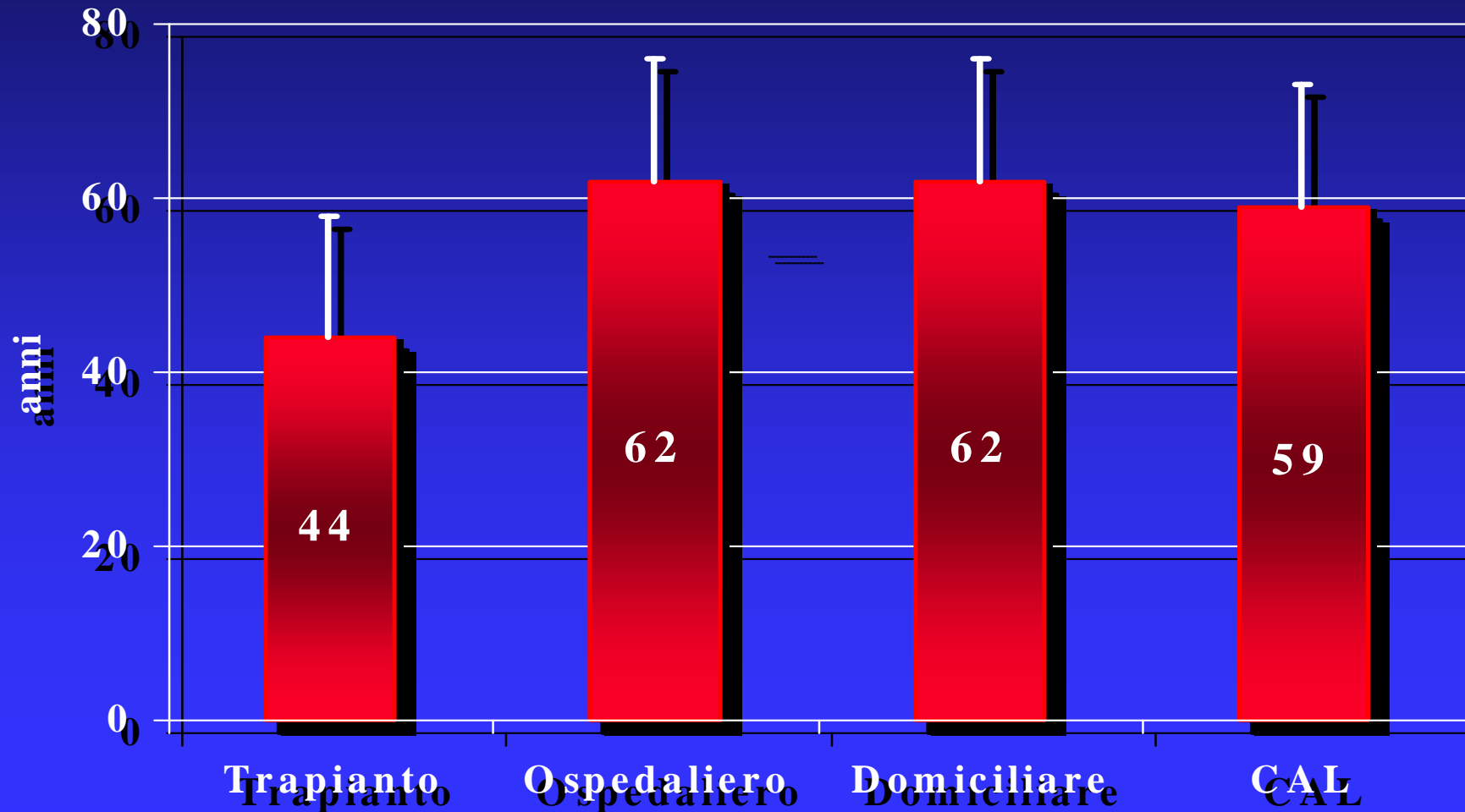
Programmi di trattamento

Registro Lombardo Dialisi e Trapianto



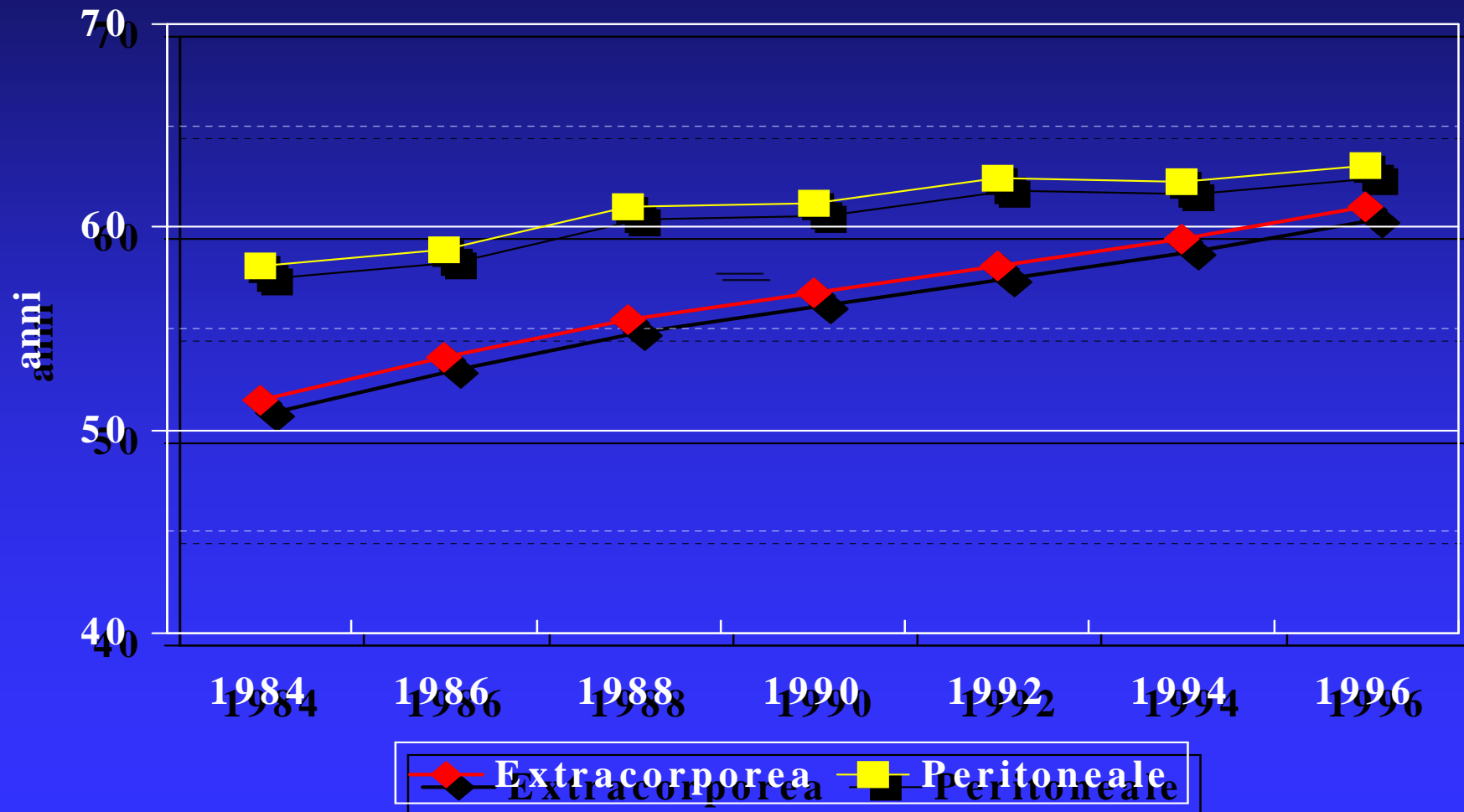
Età anagrafica : pazienti prevalenti

Registro Lombardo Dialisi e Trapianto



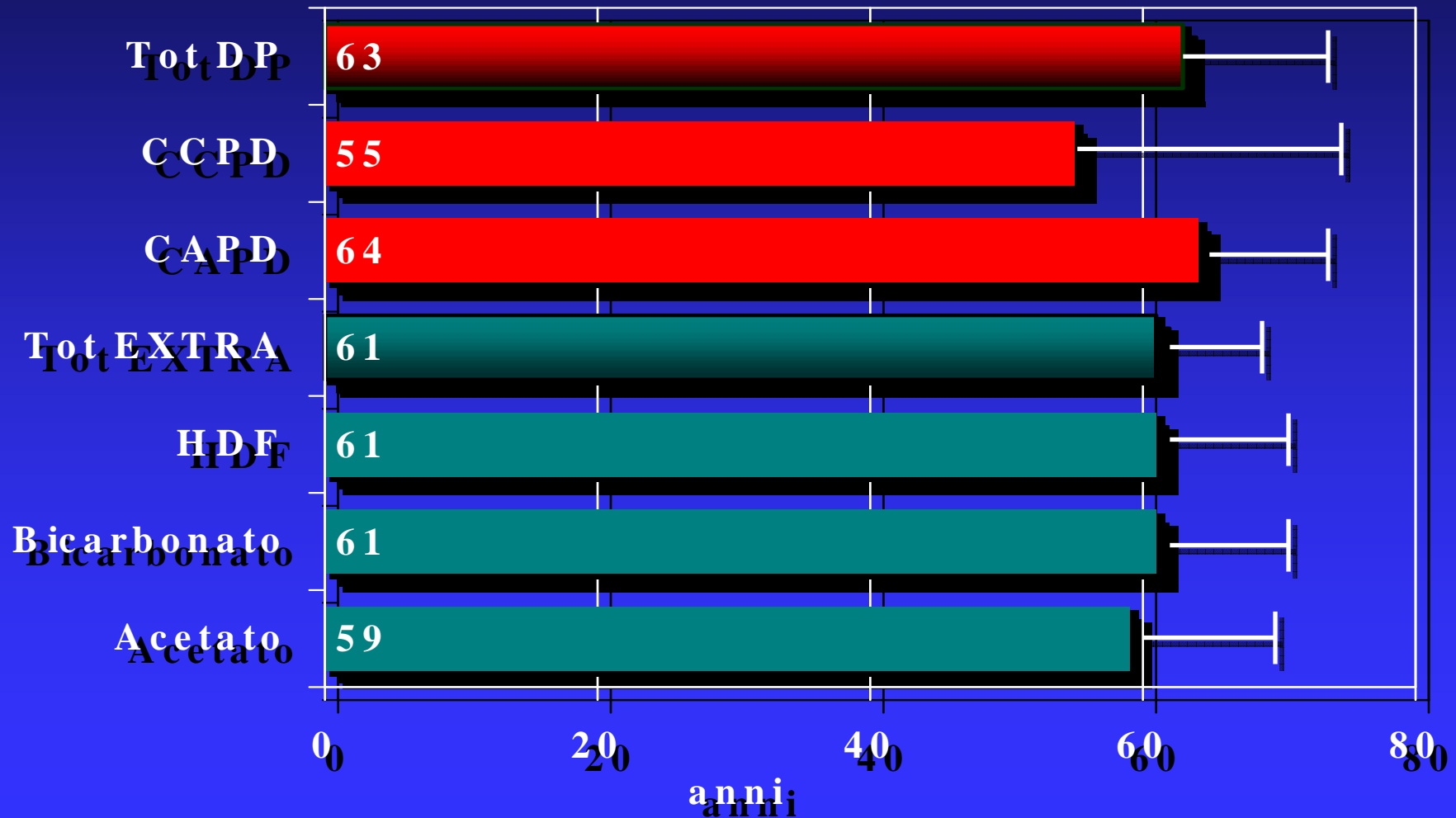
Età anagrafica : pazienti in trattamento

Registro Lombardo Dialisi e Trapianto



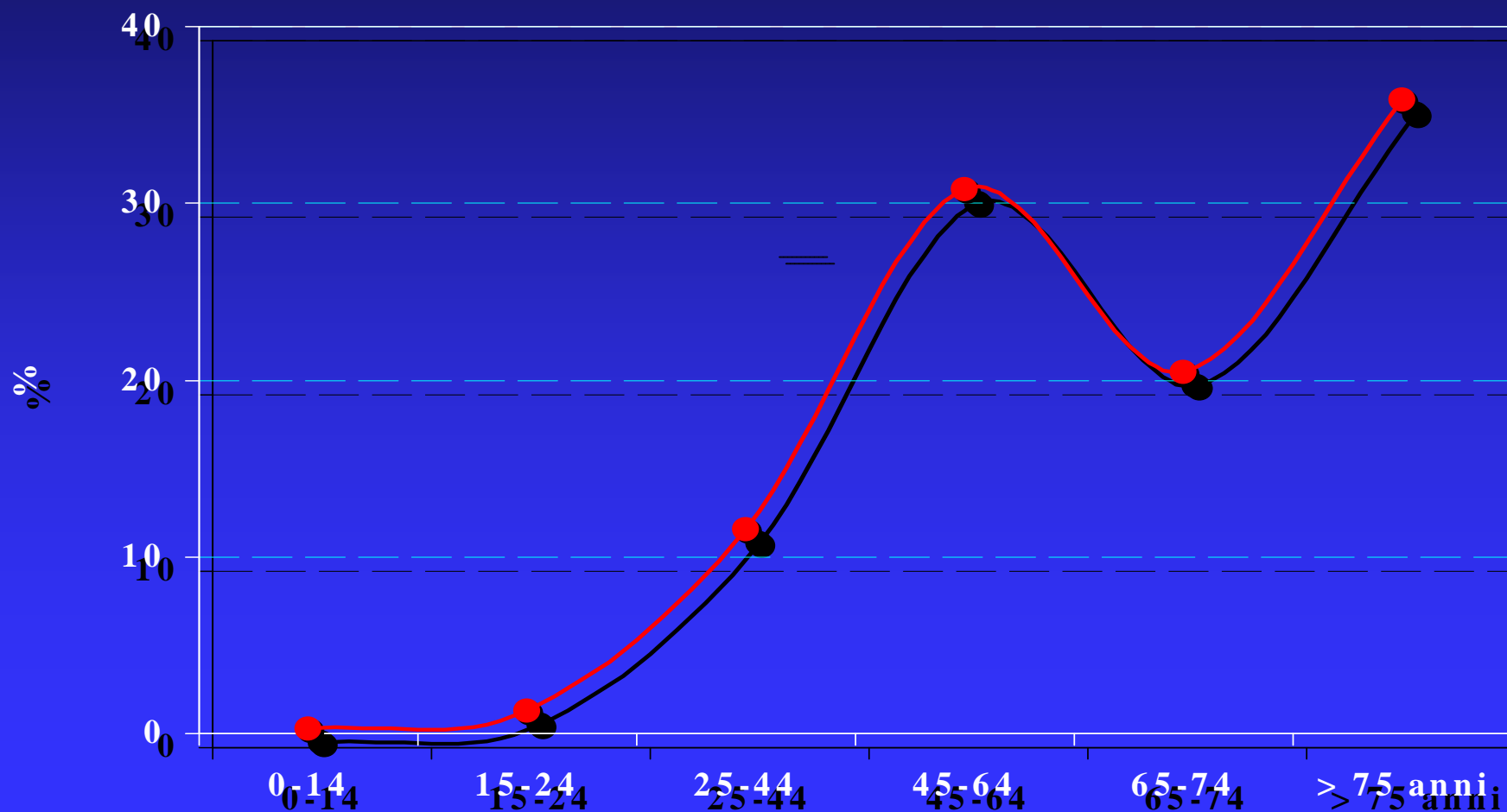
Età anagrafica : pazienti prevalenti

Registro Lombardo Dialisi e Trapianto



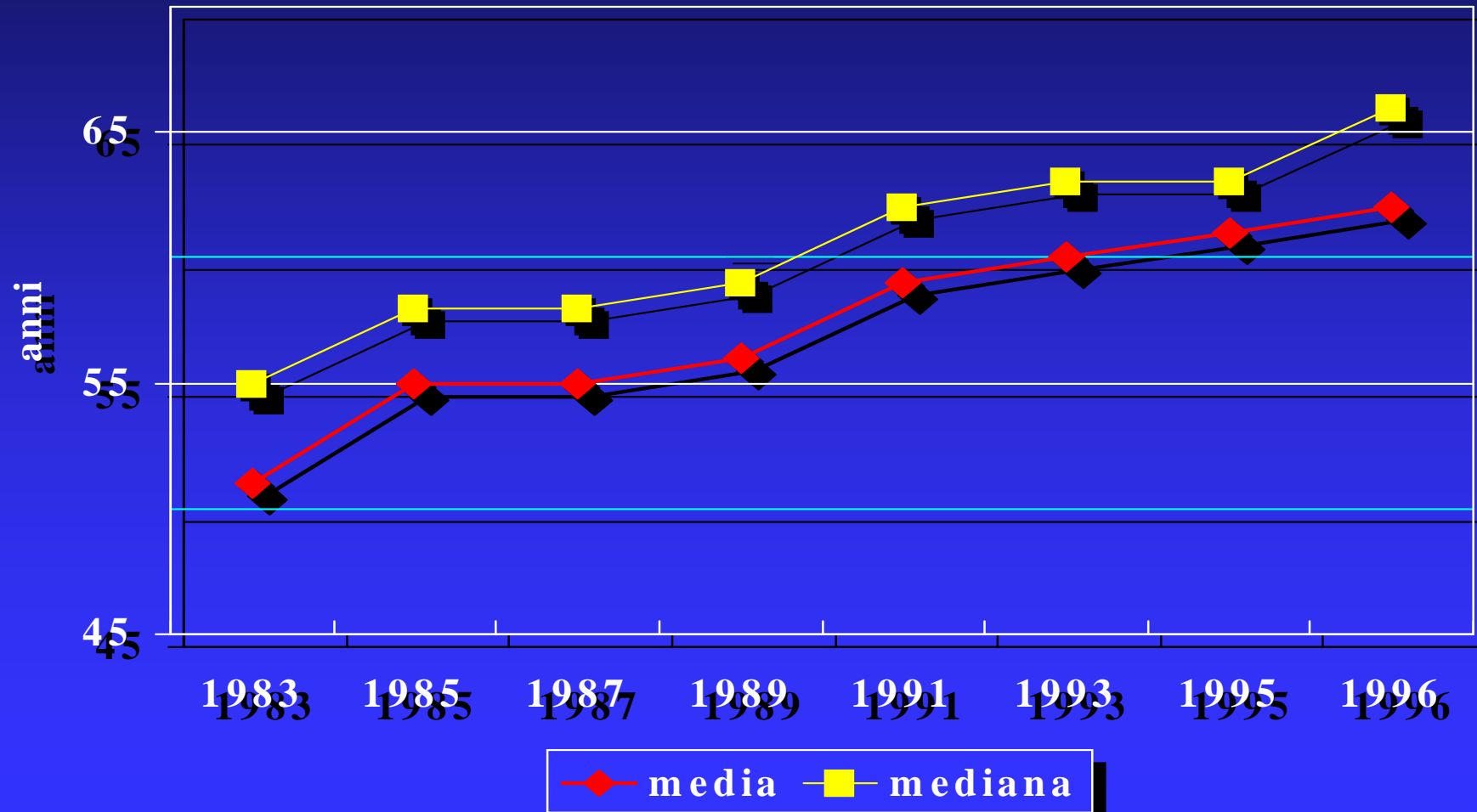
Distribuzione nuovi ingressi per classi di età e tipo di trattamento: CCPD

Registro Lombardo Dialisi e Trapianto



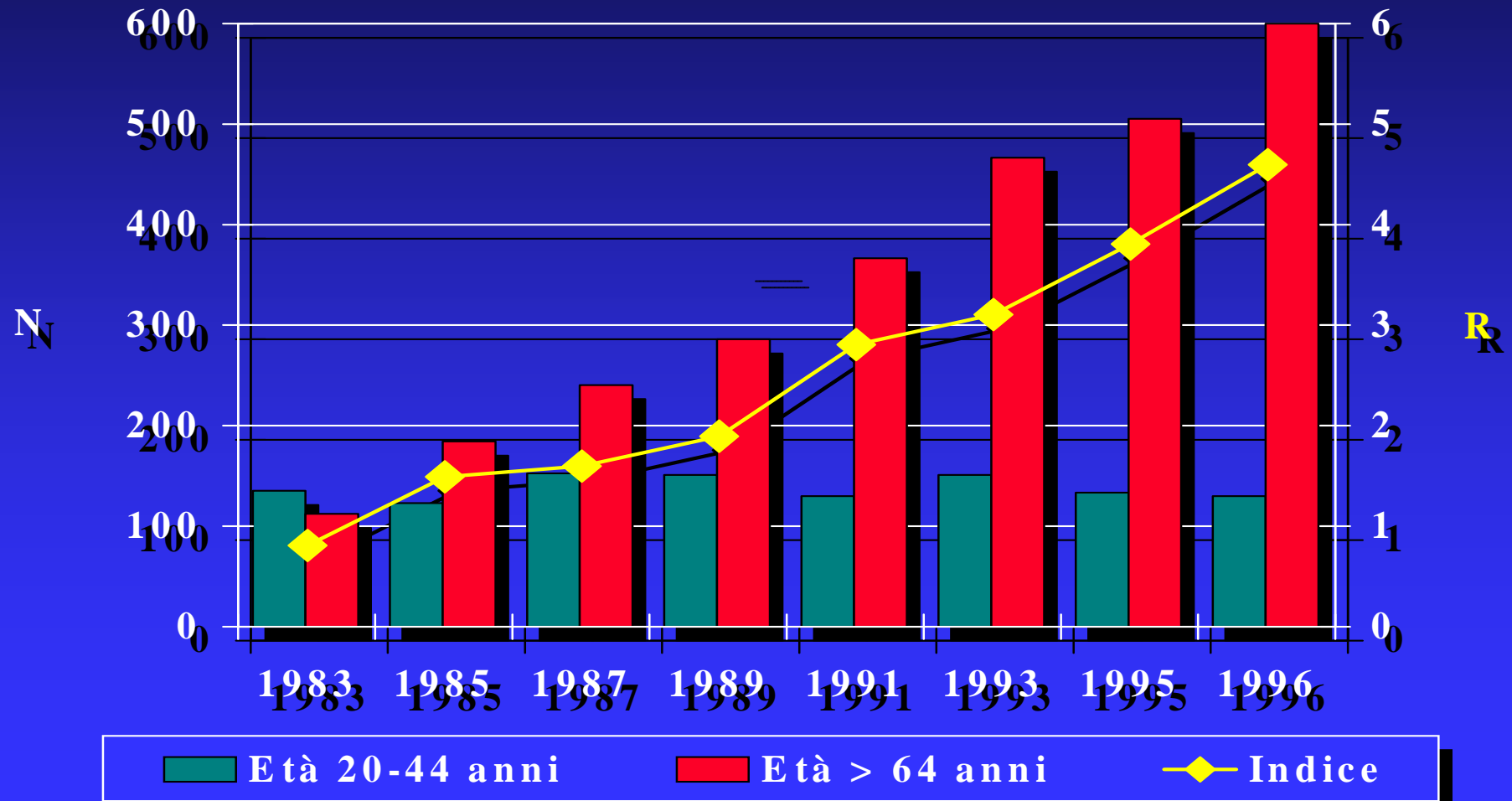
Età anagrafica : nuovi ingressi

Registro Lombardo Dialisi e Trapianto



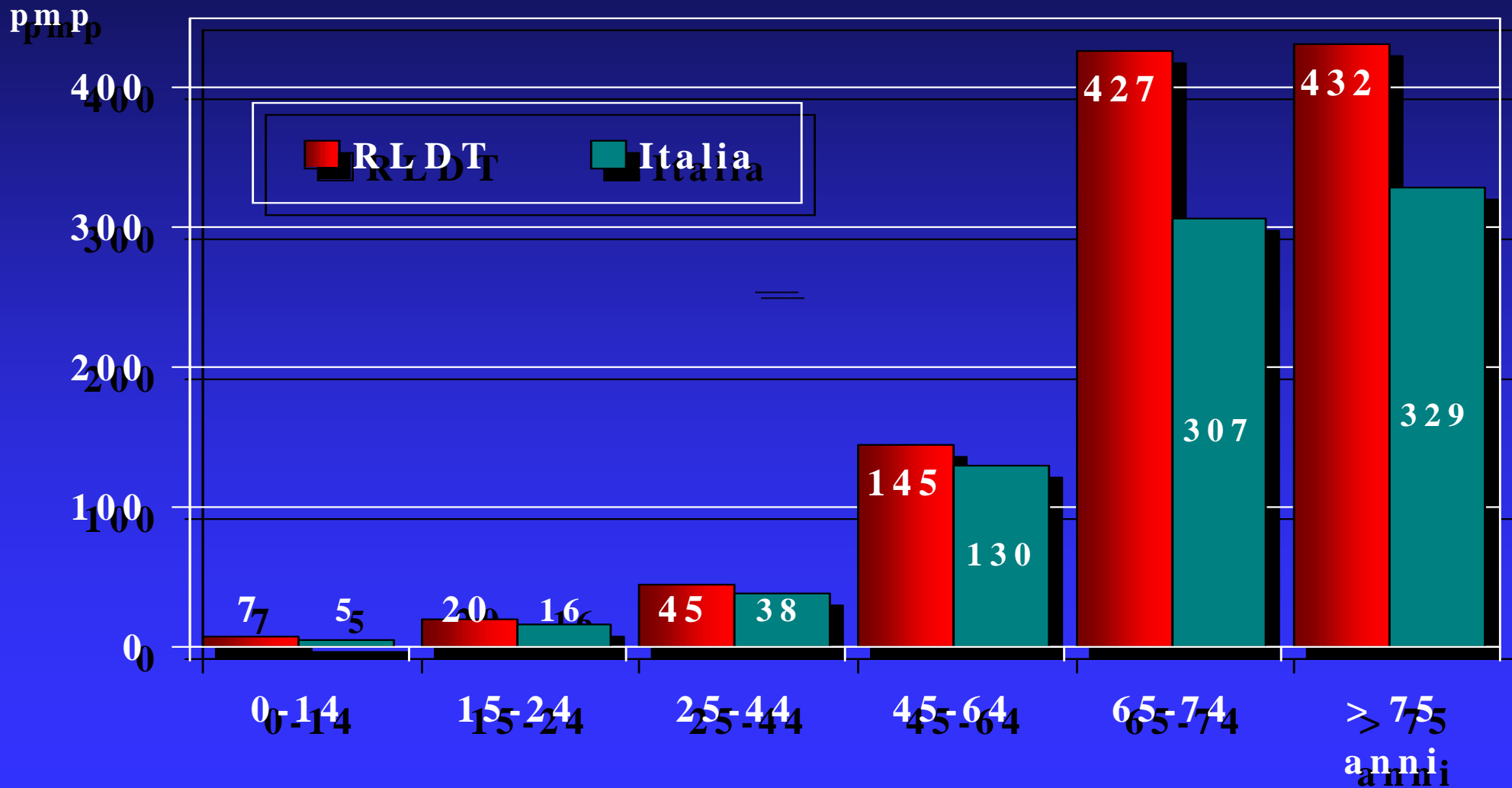
Indice di vecchiaia

Registro Lombardo Dialisi e Trapianto



Incidenza strato specifica

Registro Lombardo Dialisi e Trapianto



Nefropatie primitive : prevalenza

Registro Lombardo Dialisi e Trapianto



	<i>M/F</i>	<i>(%)</i>	<i>Italia (%)</i>
Glomerulari	2.00	26.5	23.8
ESK	1.37	15.6	18.8
Vascolari	1.88	14.8	15.0
Interstiziali	0.90	13.3	14.4
Cistiche	0.91	12.1	12.0
Diabete	1.28	7.9	8.7
Sistemiche	0.76	3.8	3.2
Altre		6.0	4.1

Nefropatie primitive : incidenza

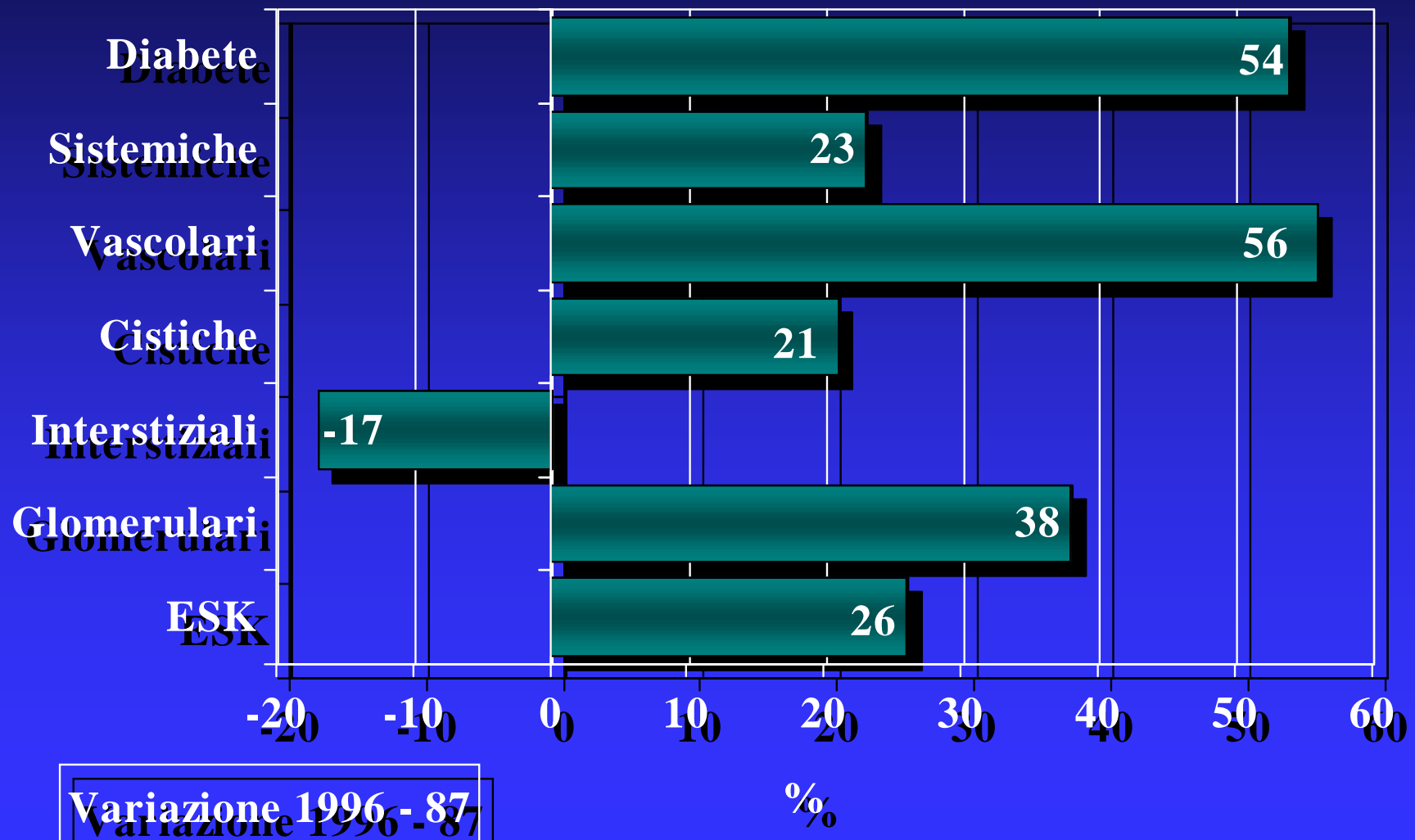
Registro Lombardo Dialisi e Trapianto



	<i>%</i>	<i>pmp</i>	<i>Italia (pmp)</i>
Glomerulari	21.9	27.8	18.9
Vascolari	19.9	25.2	21.5
ESK	16.9	21.3	24.6
Diabete	13.0	16.4	14.0
Interstiziali	9.1	11.5	14.7
Cistiche	8.4	10.7	9.8
Sistemiche	4.5	5.4	4.4
Altre	6.3	8.0	6.0

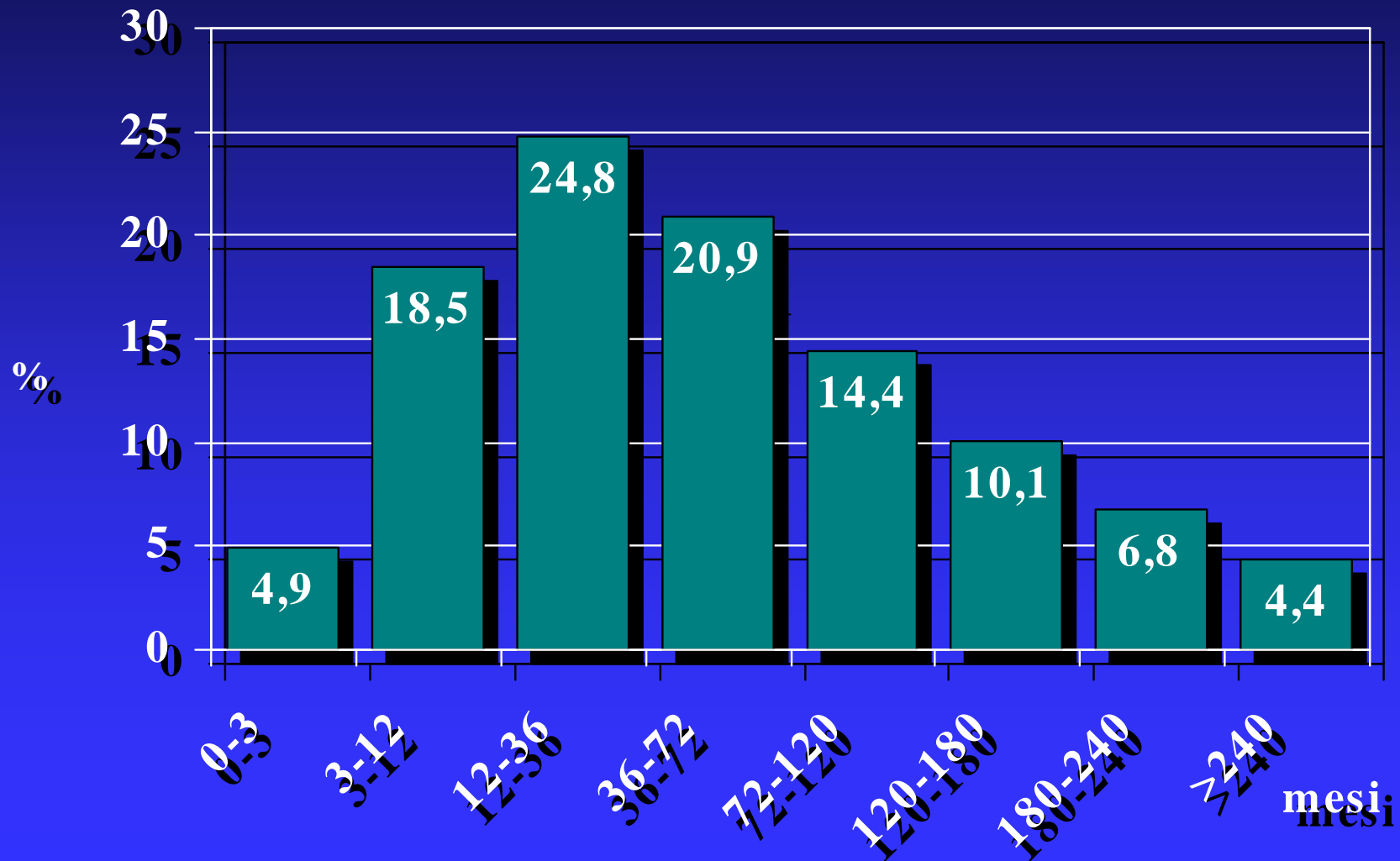
Nefropatie primitive : incidenza

Registro Lombardo Dialisi e Trapianto



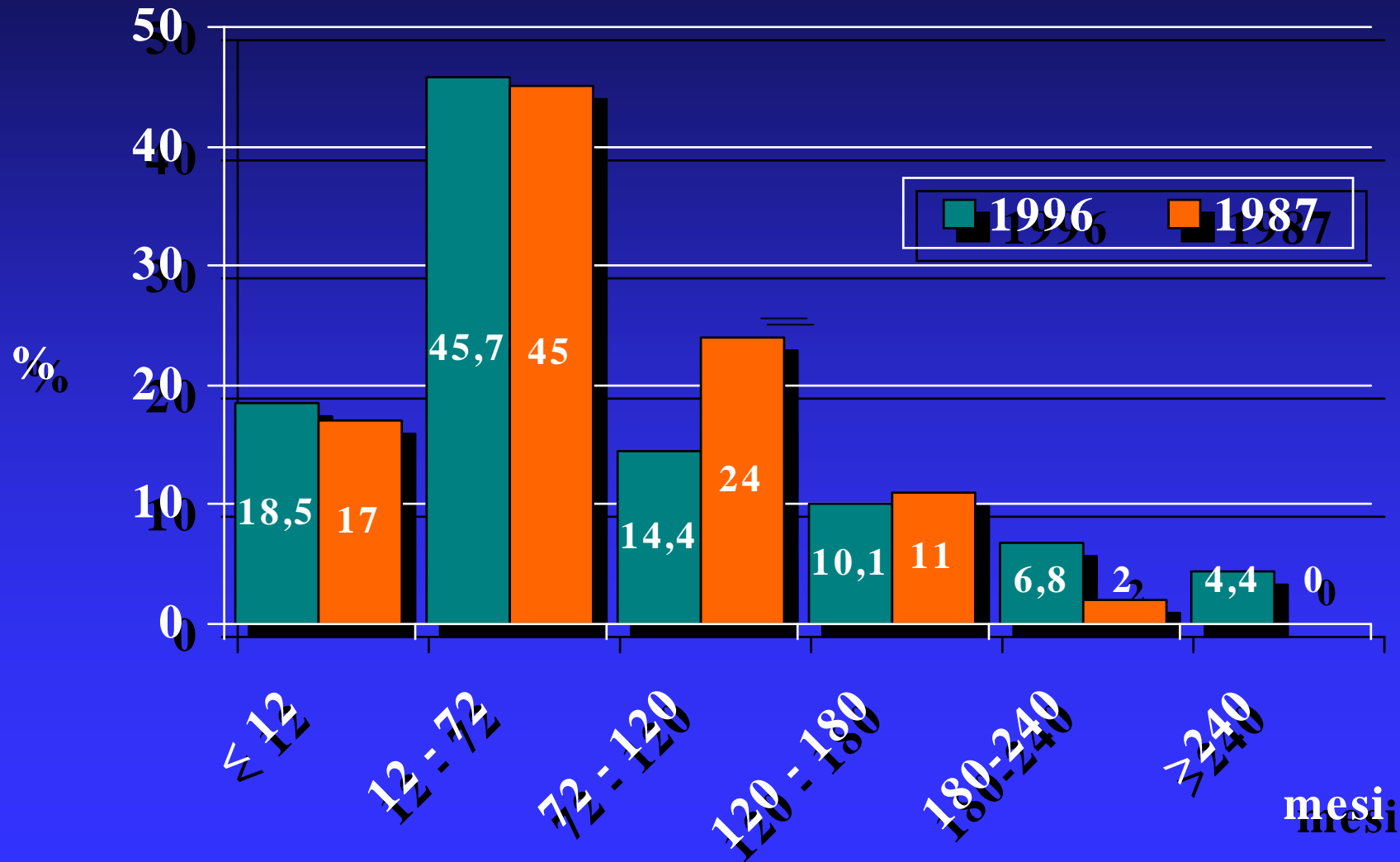
Età dialitica

Registro Lombardo Dialisi e Trapianto



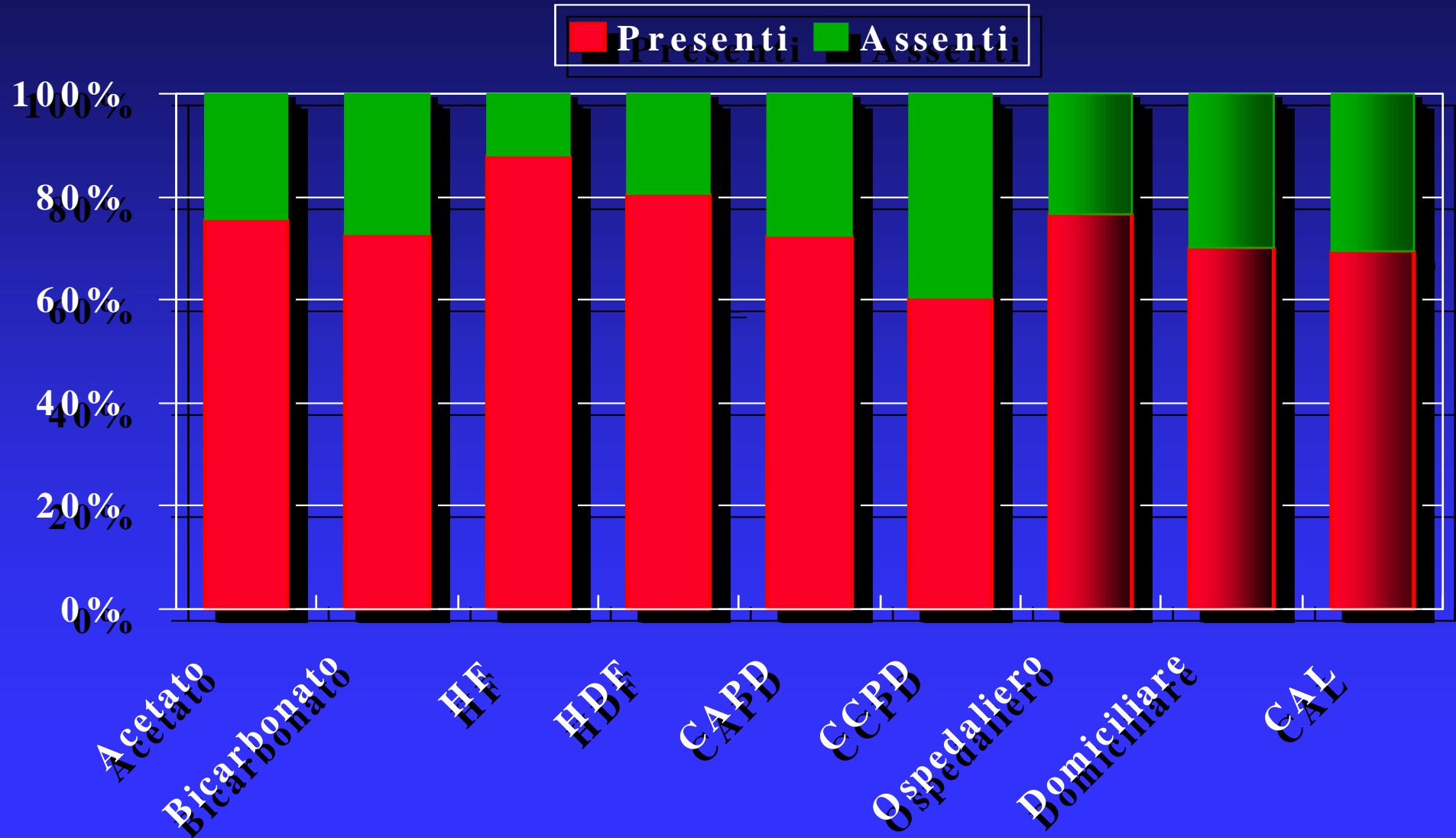
Età dialitica

Registro Lombardo Dialisi e Trapianto



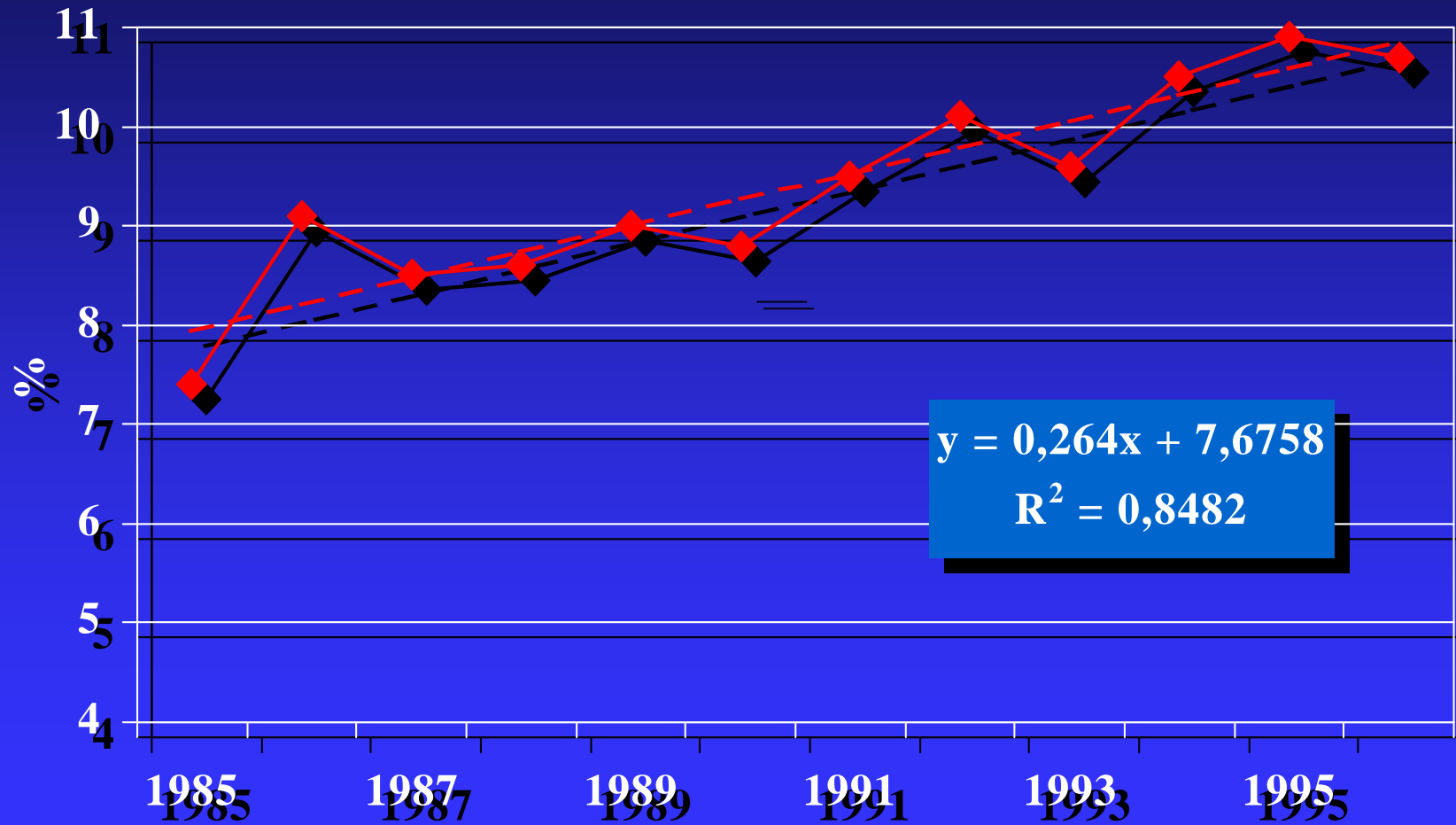
Fattori comorbidi

Registro Lombardo Dialisi e Trapianto



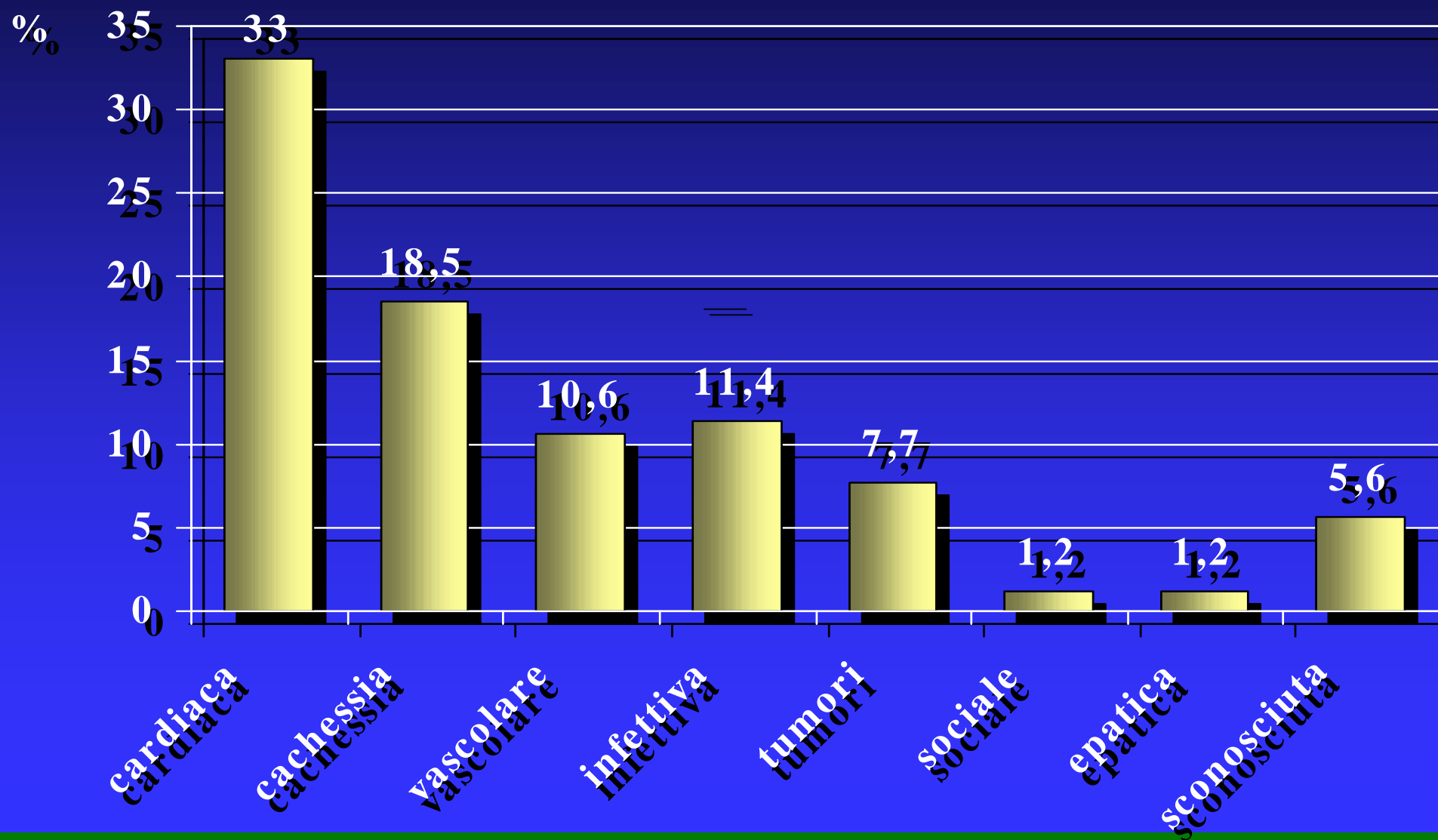
Mortalità

Registro Lombardo Dialisi e Trapianto



Cause di morte

Registro Lombardo Dialisi e Trapianto



Complicanze

Registro Lombardo Dialisi e Trapianto



- *Anemia*
- *Sindrome del tunnel carpale*
- ⇒ *Iperparatiroidismo secondario*