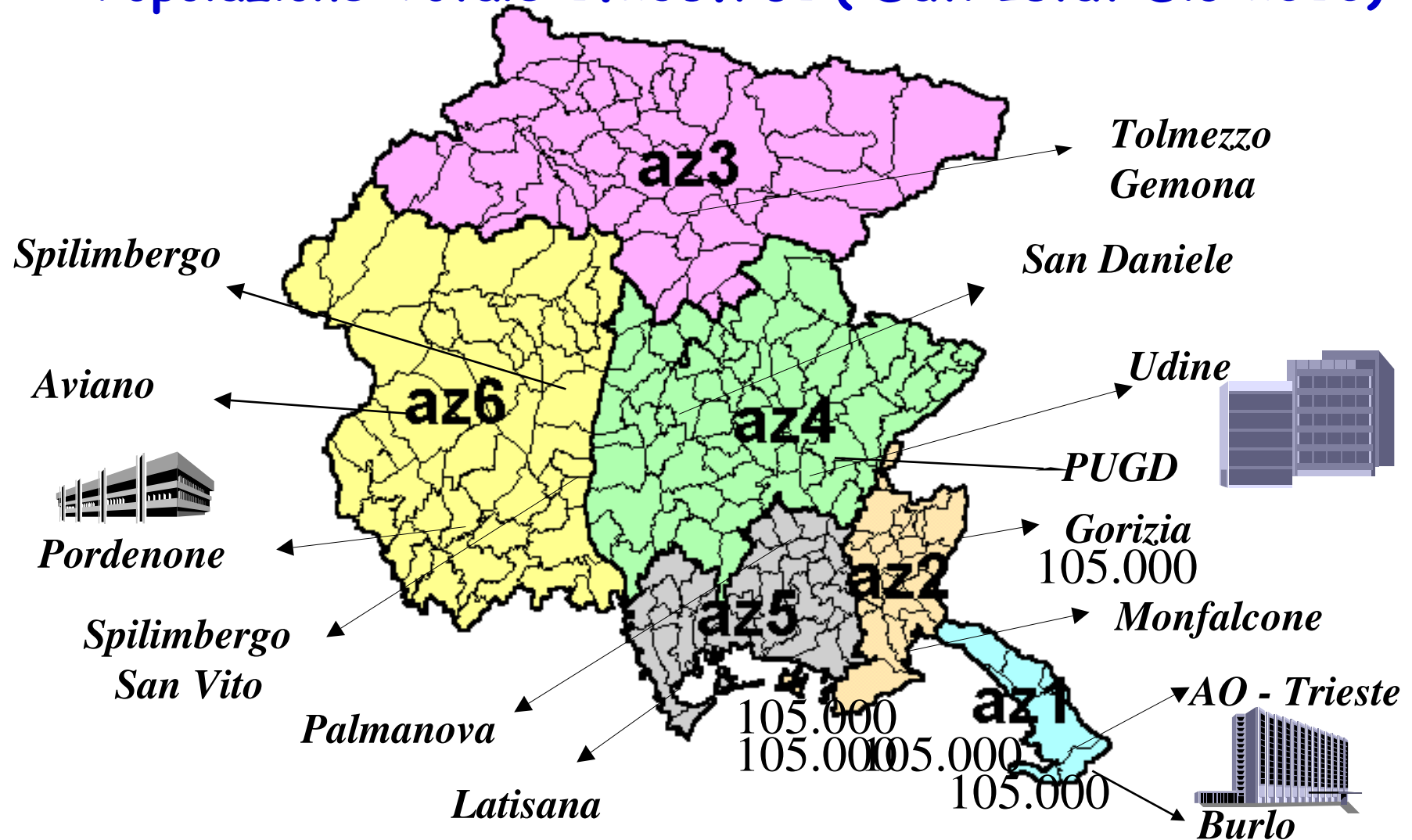


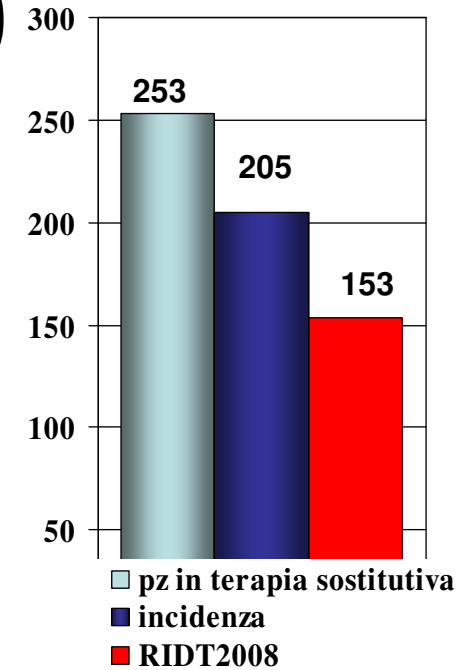
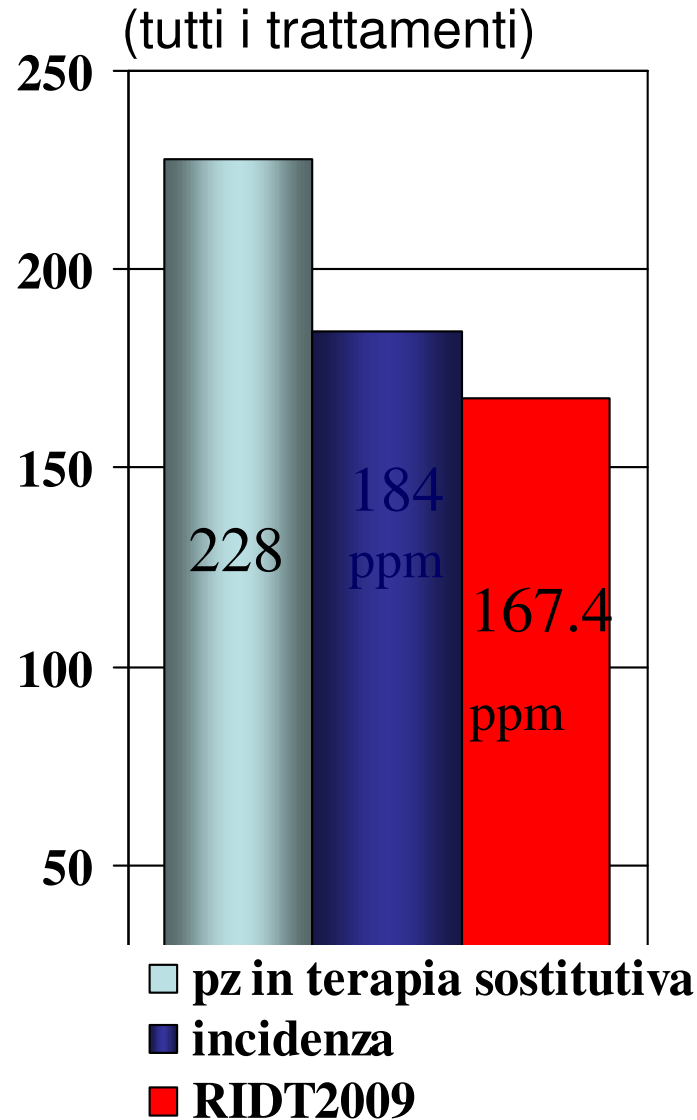


Ospedali della rete di sorveglianza

Popolazione Totale 1.235.761 (Dati Istat Dic 2010)



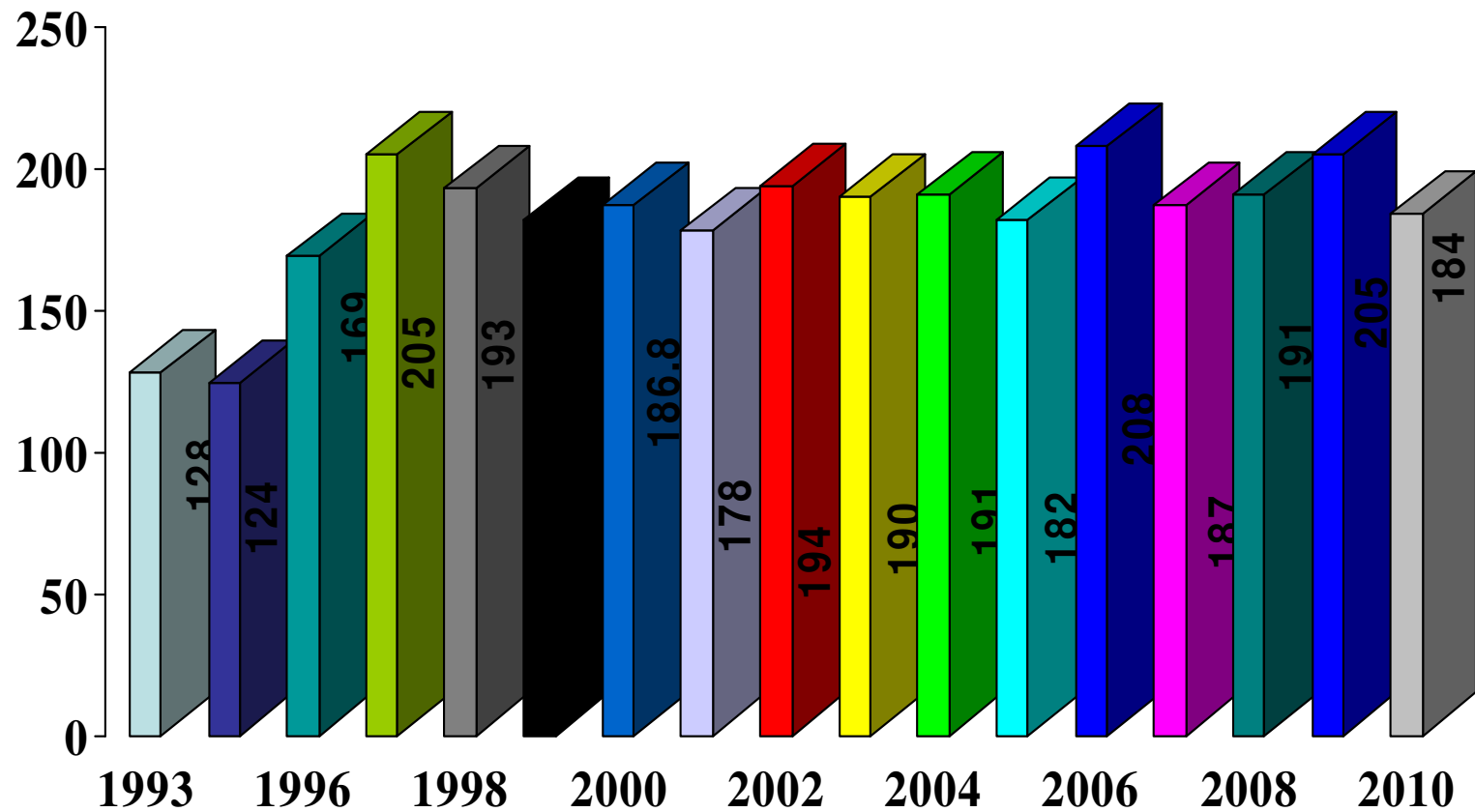
INCIDENTI 2010



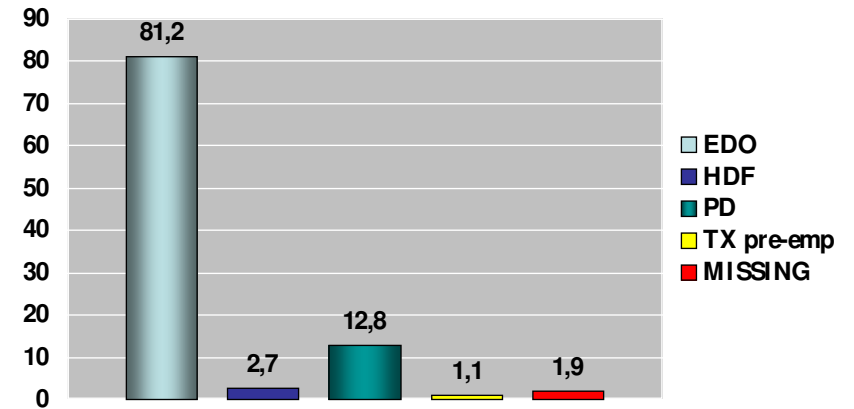
DATI 2009

| REGION | INHABITANTS | COVERAGE | INCIDENTS | INCIDENCE PMP |
|------------|-----------------|-------------|--------------|---------------|
| ABR | 1338898 | 100 * | 199 | 148.6 |
| BAS | 588879 | 100 * | 88 | 149.4 |
| CAL | 2009330 | 100 * | 300 | 149.3 |
| CAM | 5824662 | 90.3 * | 1352 | 232.1 |
| EMR | 4395569 | 100 * | 659 | 207.4 |
| FVG | 1234079 | 100 * | 256 | 159.8 |
| LAZ | 5681868 | 100 * | 908 | 144.8 |
| LIG | 1615986 | 100 * | 234 | 176.8 |
| LOM | 9826141 | 49.5 ** | 1737 | 144.9 |
| MAR | 1559542 | 90.0 *** | 226 | 174.3 |
| PIE | 446230 | 66.7 ** | 775 | 164.8 |
| PUG | 4084035 | 100 * | 673 | 141.7 |
| SAR | 1672404 | 94.0 * | 237 | 219.1 |
| SIC | 5042992 | 100 * | 1105 | 115.7 |
| TAA | 1028260 | 100 * | 119 | 121.4 |
| TOS | 3730130 | 61.2 ** | 453 | 171.0 |
| UMB | 900790 | 100 * | 154 | 172.1 |
| VDA | 127866 | 100 * | 22 | 112.0 |
| VEN | 4912438 | 100 * | 550 | 112.0 |
| ITA | 60020099 | 85.1 | 10147 | 167.4 |

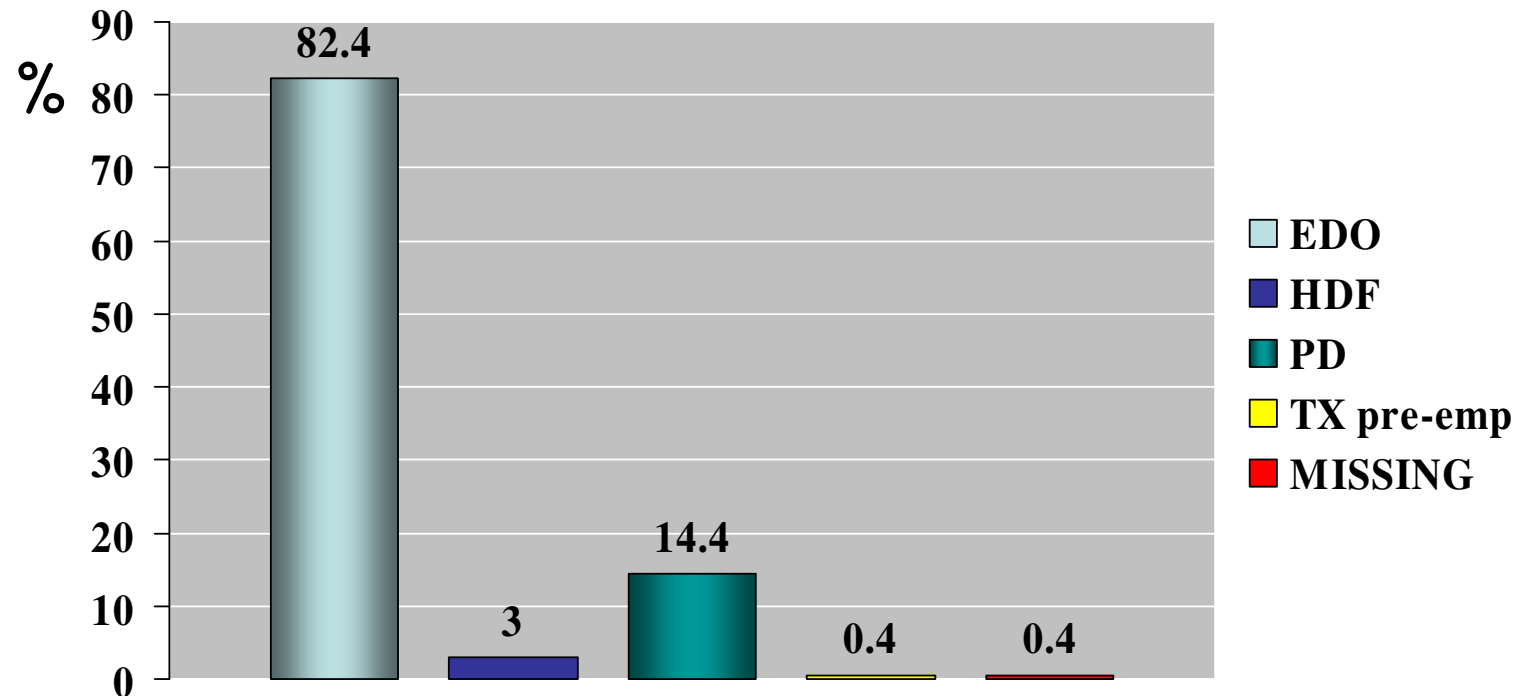
Ingressi / mil. Abitanti



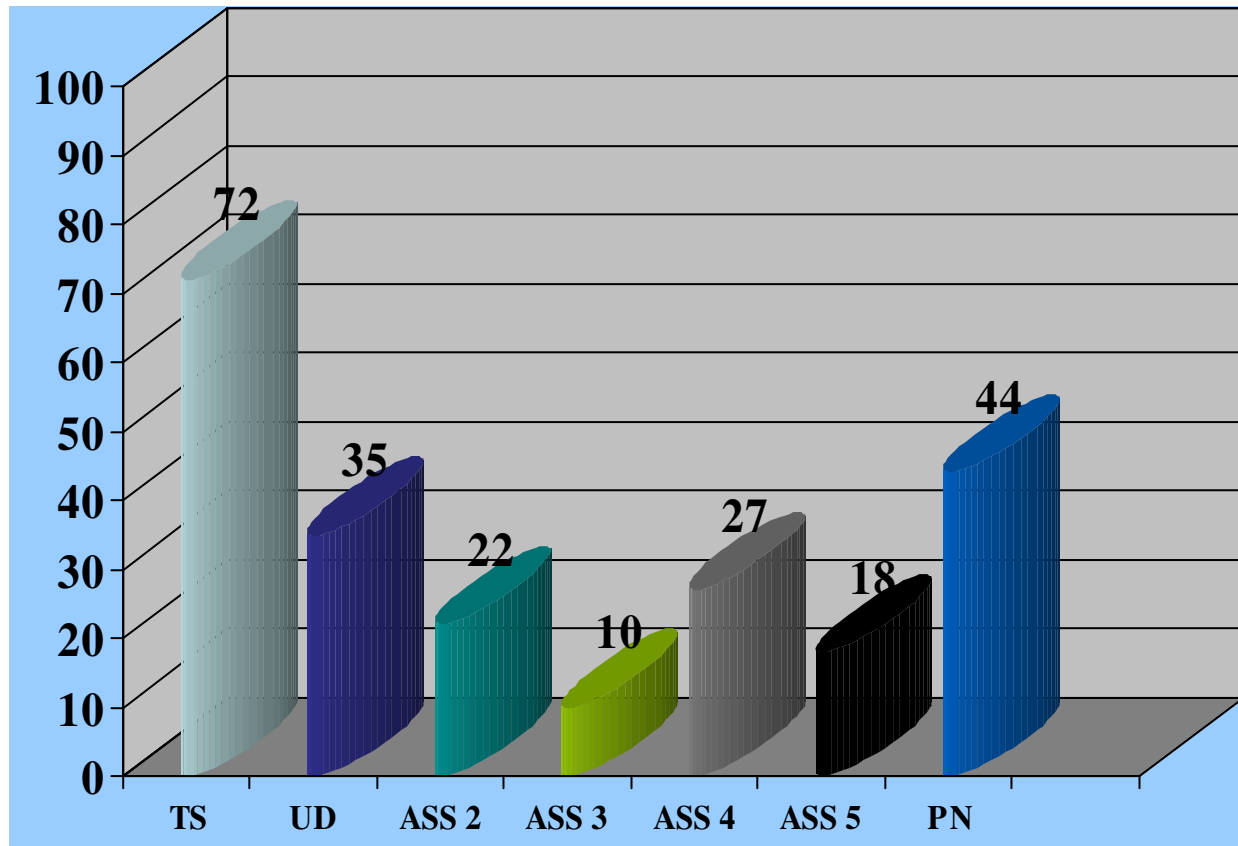
Incidenti 2010 per tipo trattamento



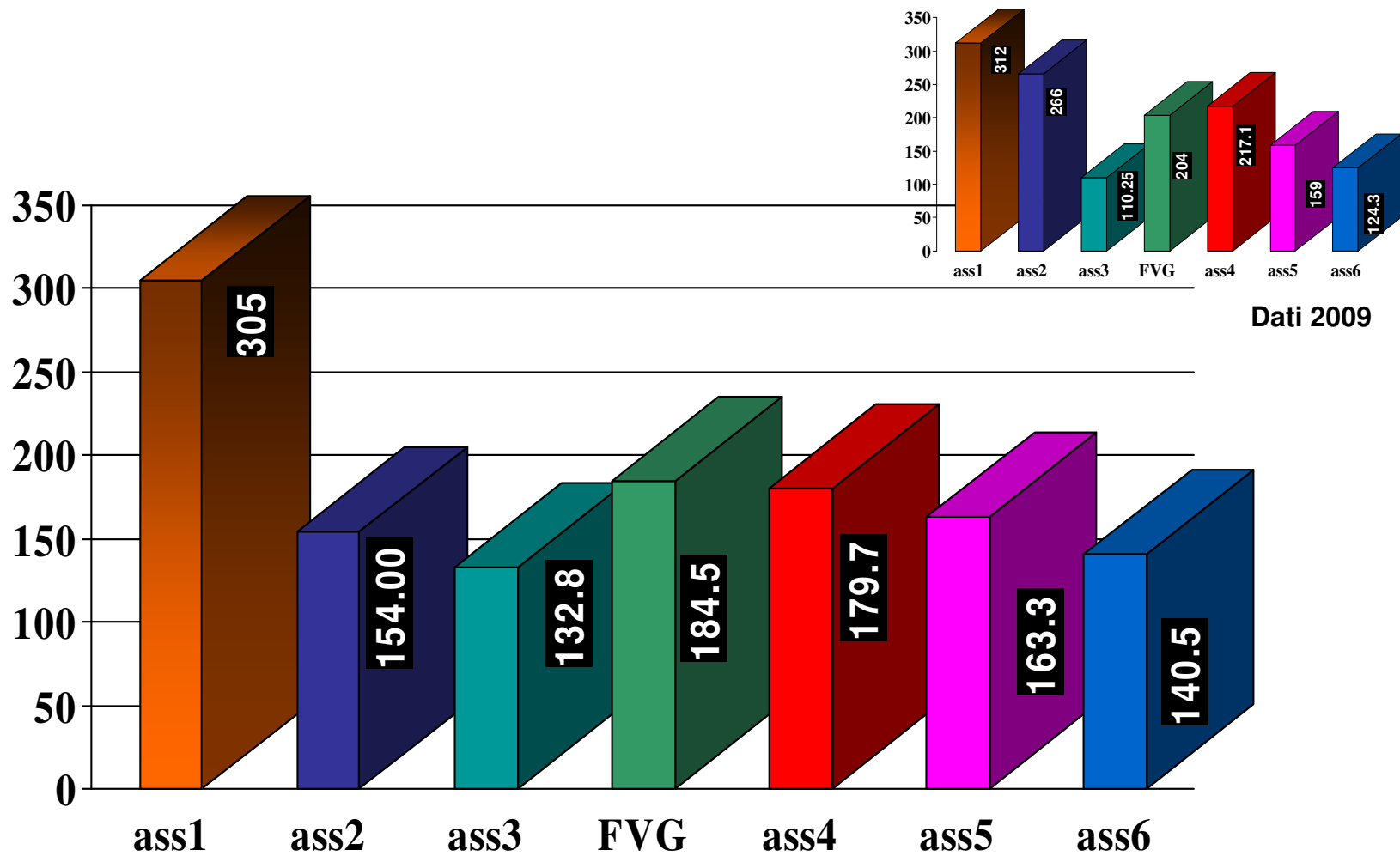
Dati 2009



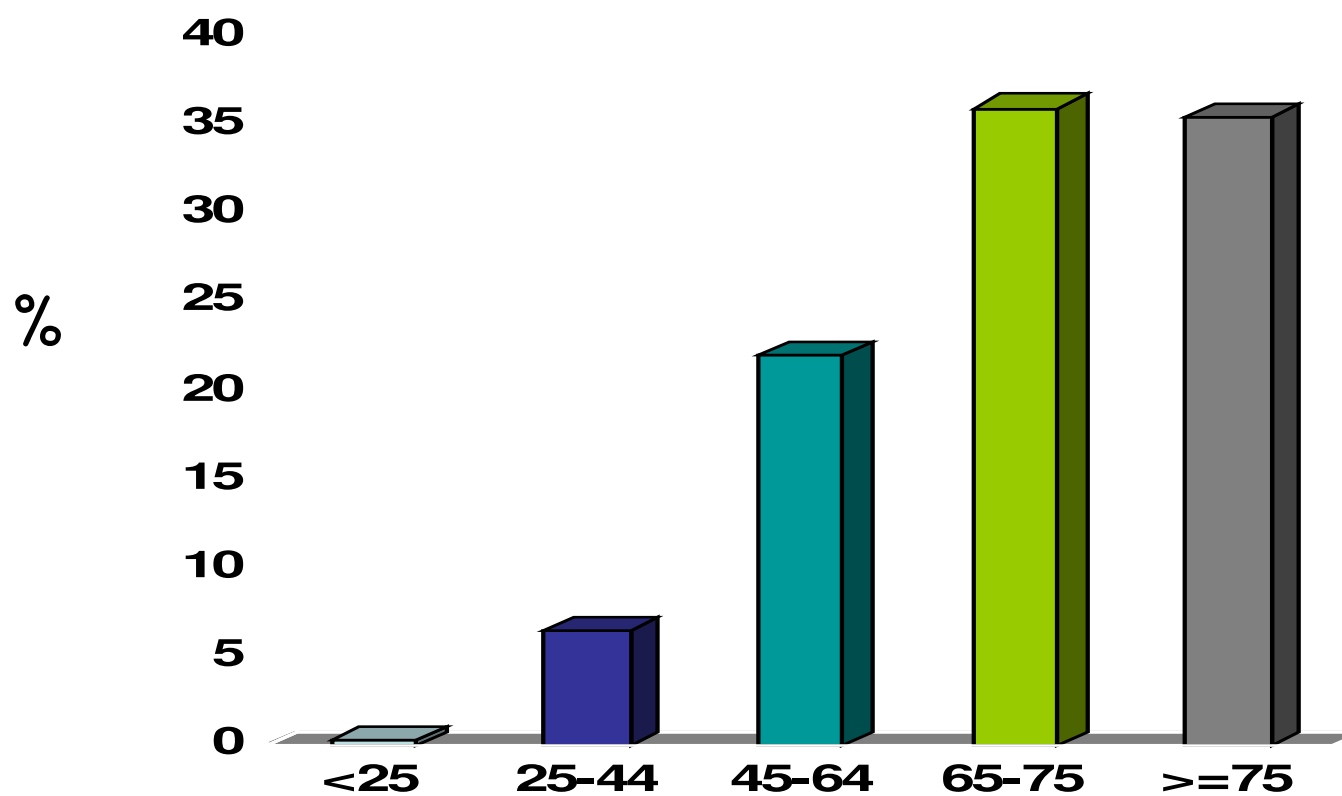
NUMERO DI PAZIENTI CRONICI INCIDENTI nel 2010



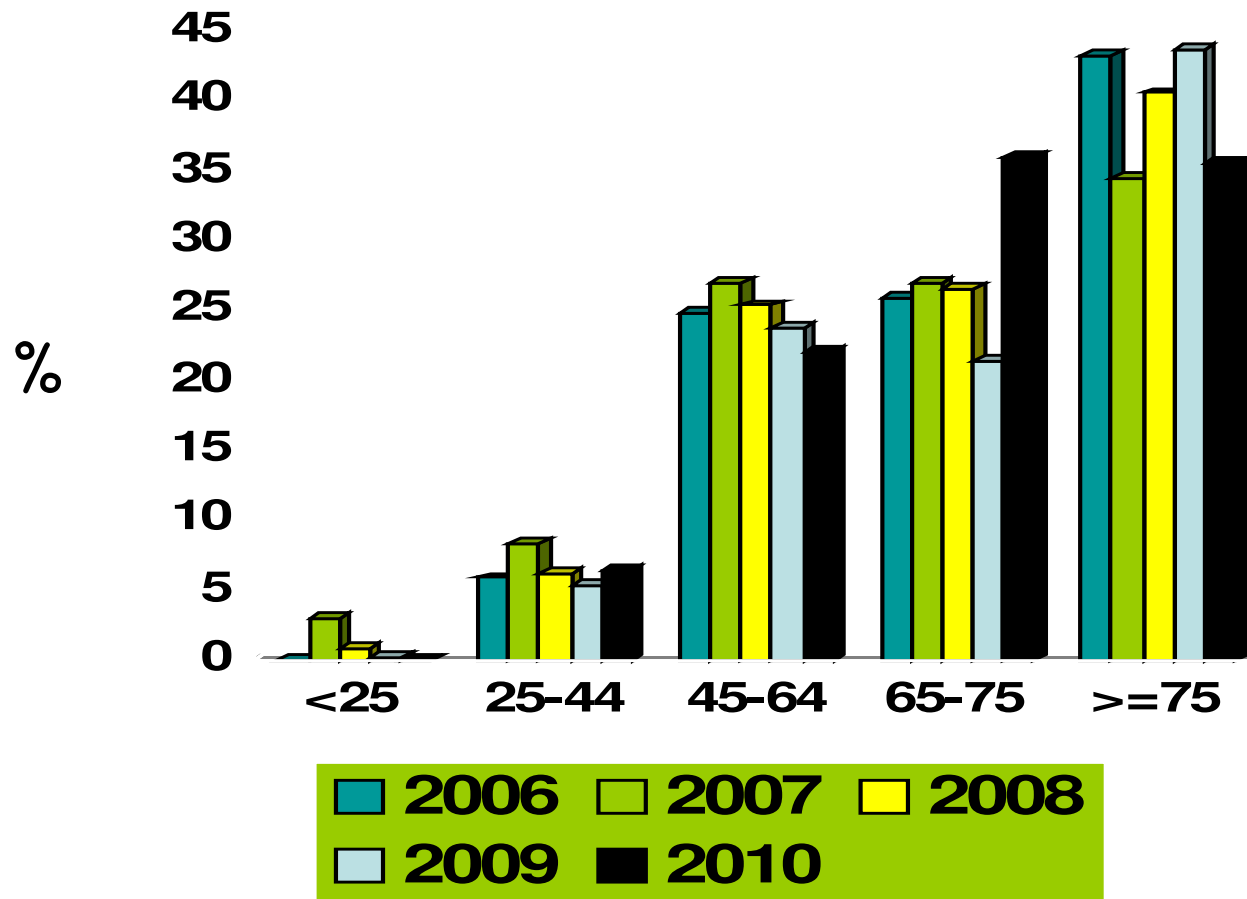
Ingressi / mil. Abitanti 2010



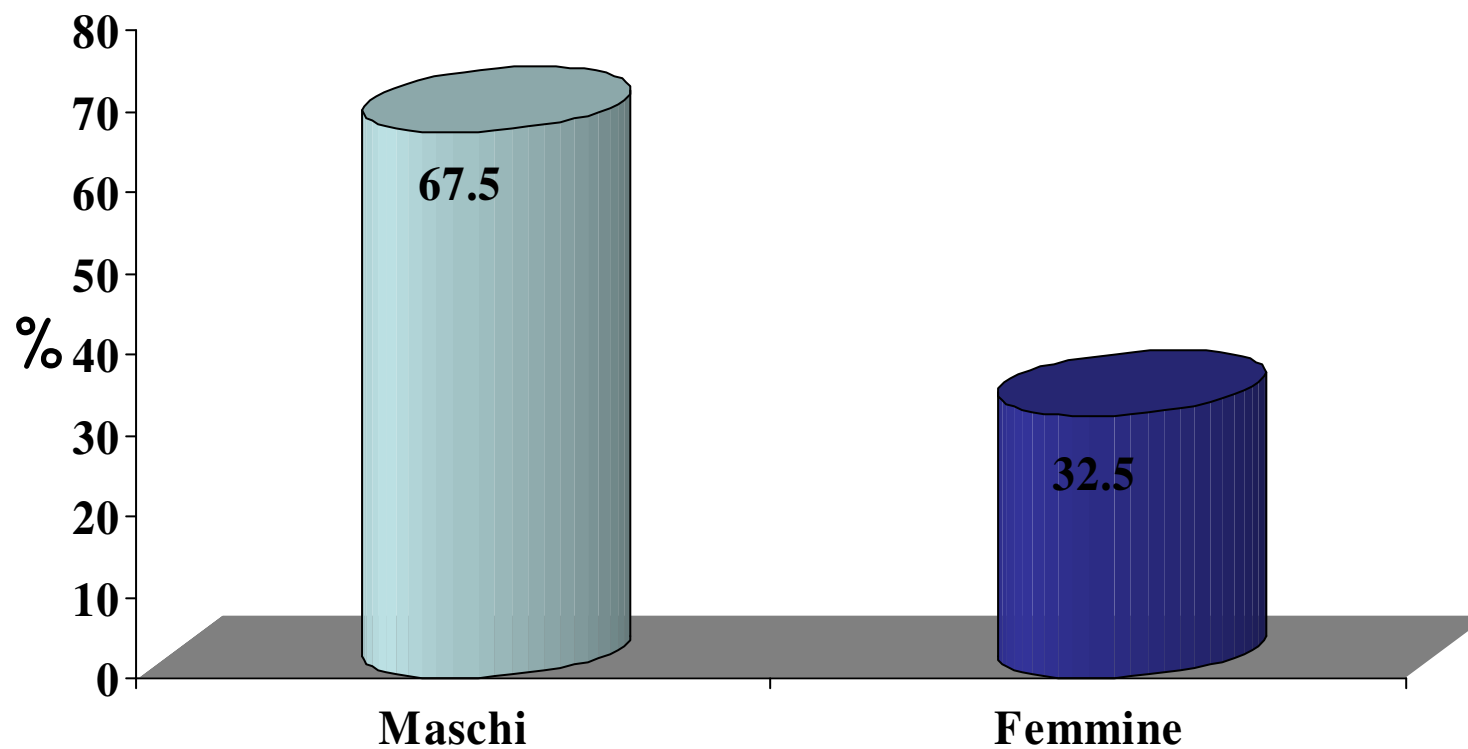
Incidenti 2010 per classe di età



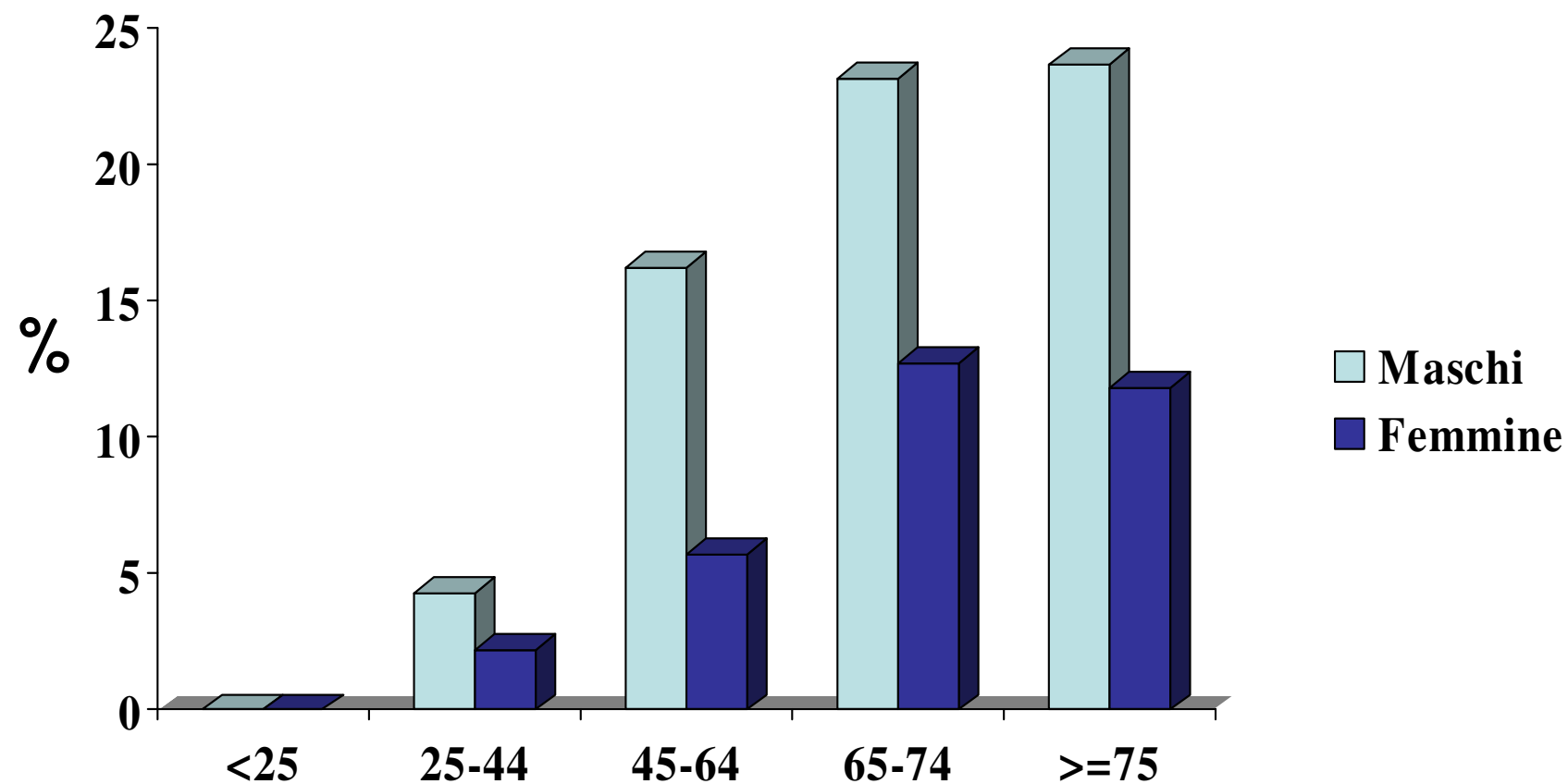
Incidenti 2006-07-08-09-10 per classe di età



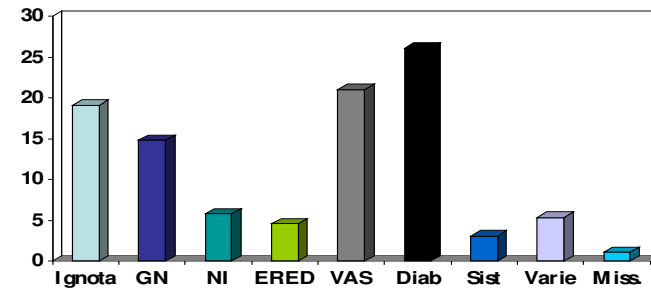
Incidenti 2010 per sesso



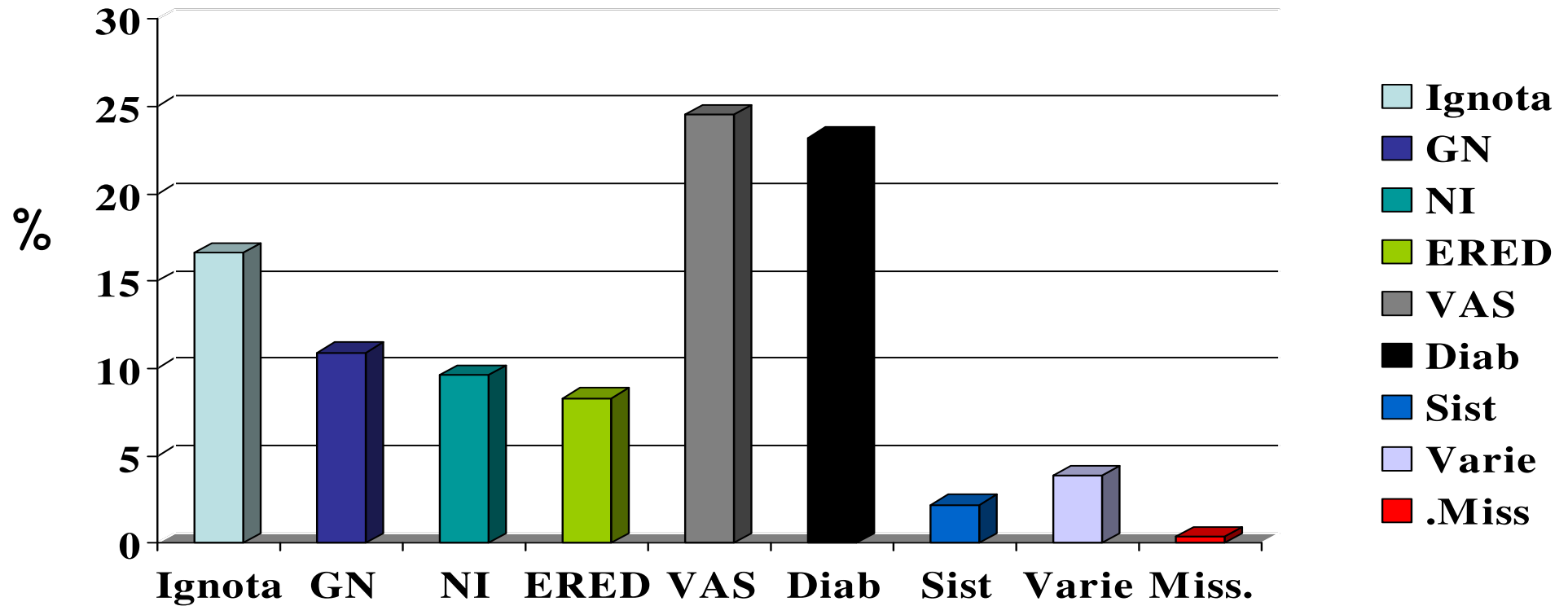
Incidenti 2010 per sesso e classe di età



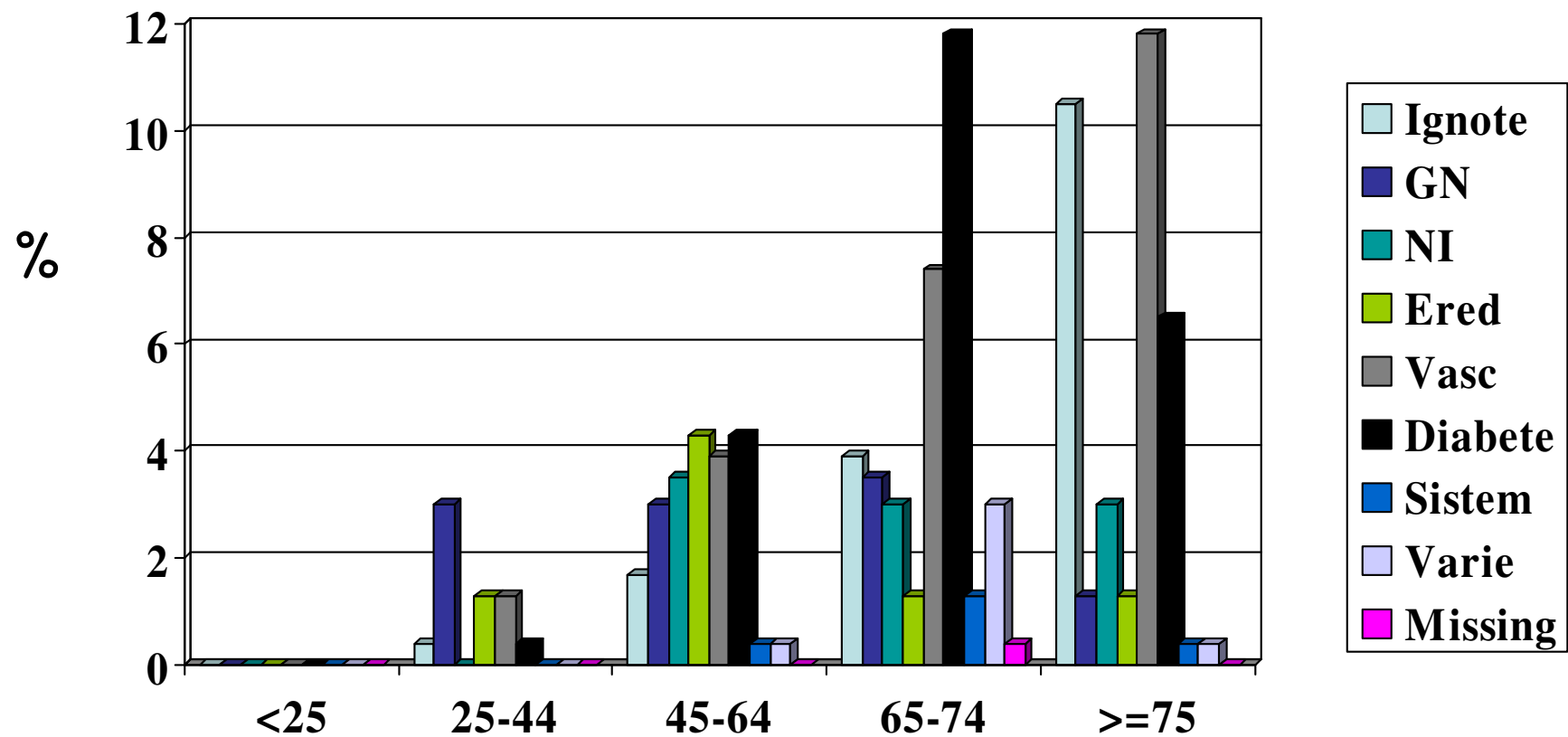
Incidenti 2010 per classe di nefropatia



Dati 2008



Incidenti 2010 per classe di nefropatia e classe di età



Incidenti 2010: Funzione Renale ad inizio Trattamento

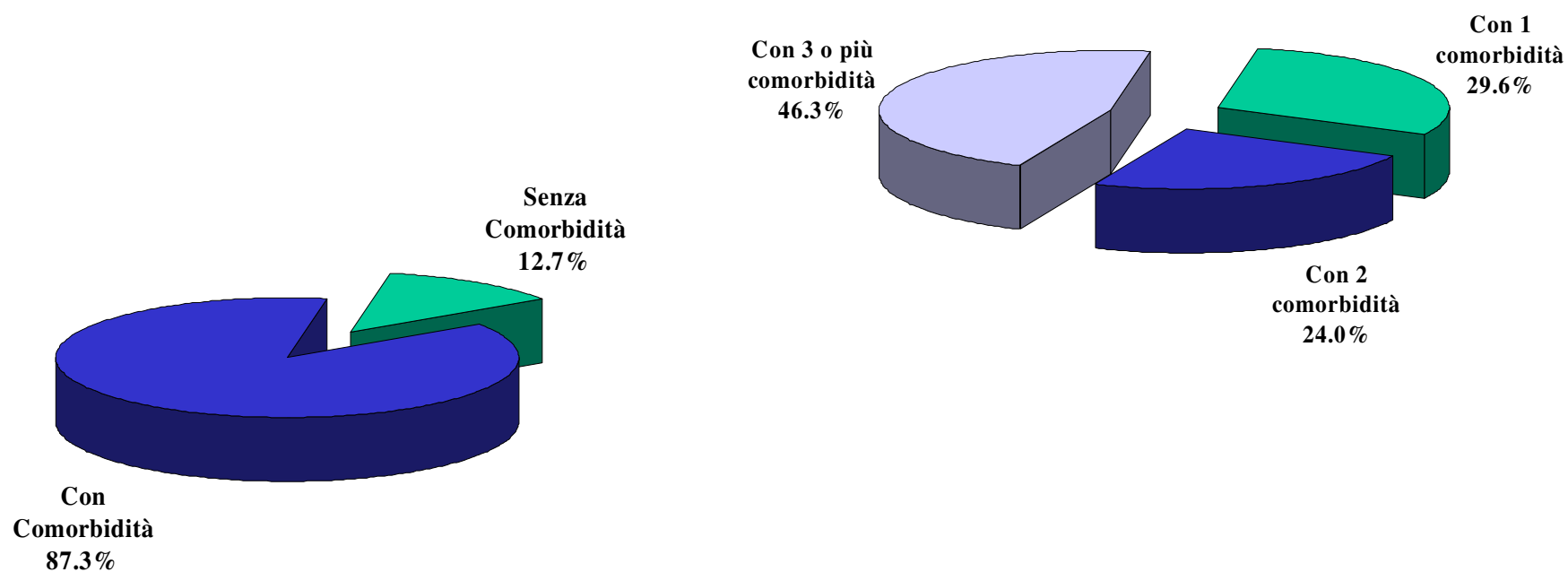
- Creatininemia media al primo trattamento 7.33 mg/dl
- MDRD medio al primo trattamento 8.56 ml/min/1.73mq

DATI INCIDENTI 2009

- Creatininemia media al primo trattamento 6.99 mg/dl
- MDRD medio al primo trattamento 8.72 ml/min/1.73mq

Incidenti 2010

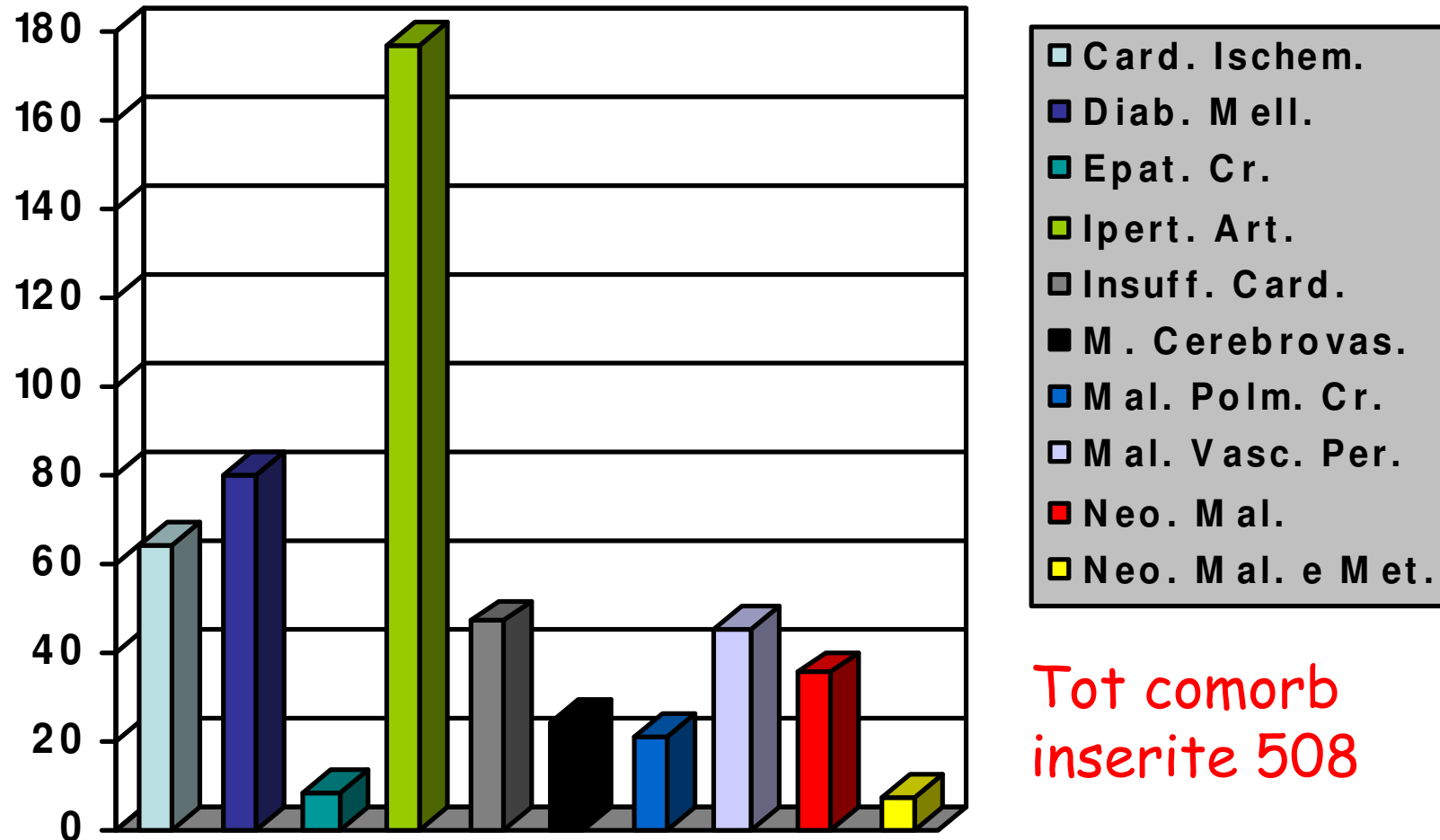
Comorbidity ad inizio trattamento



Comorbidity tot inserite n. 508

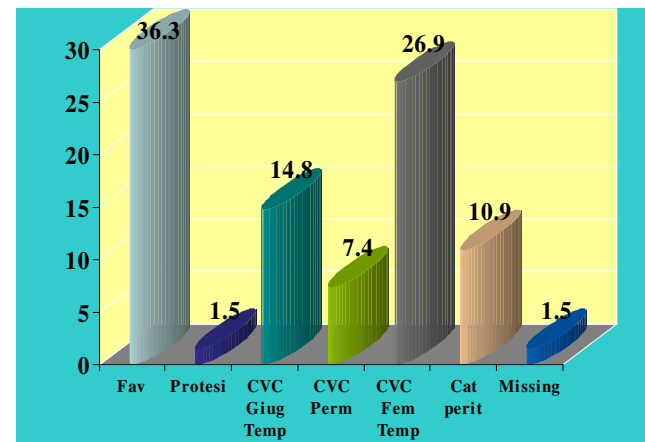
Incidenti 2010

Comorbidity at start of treatment

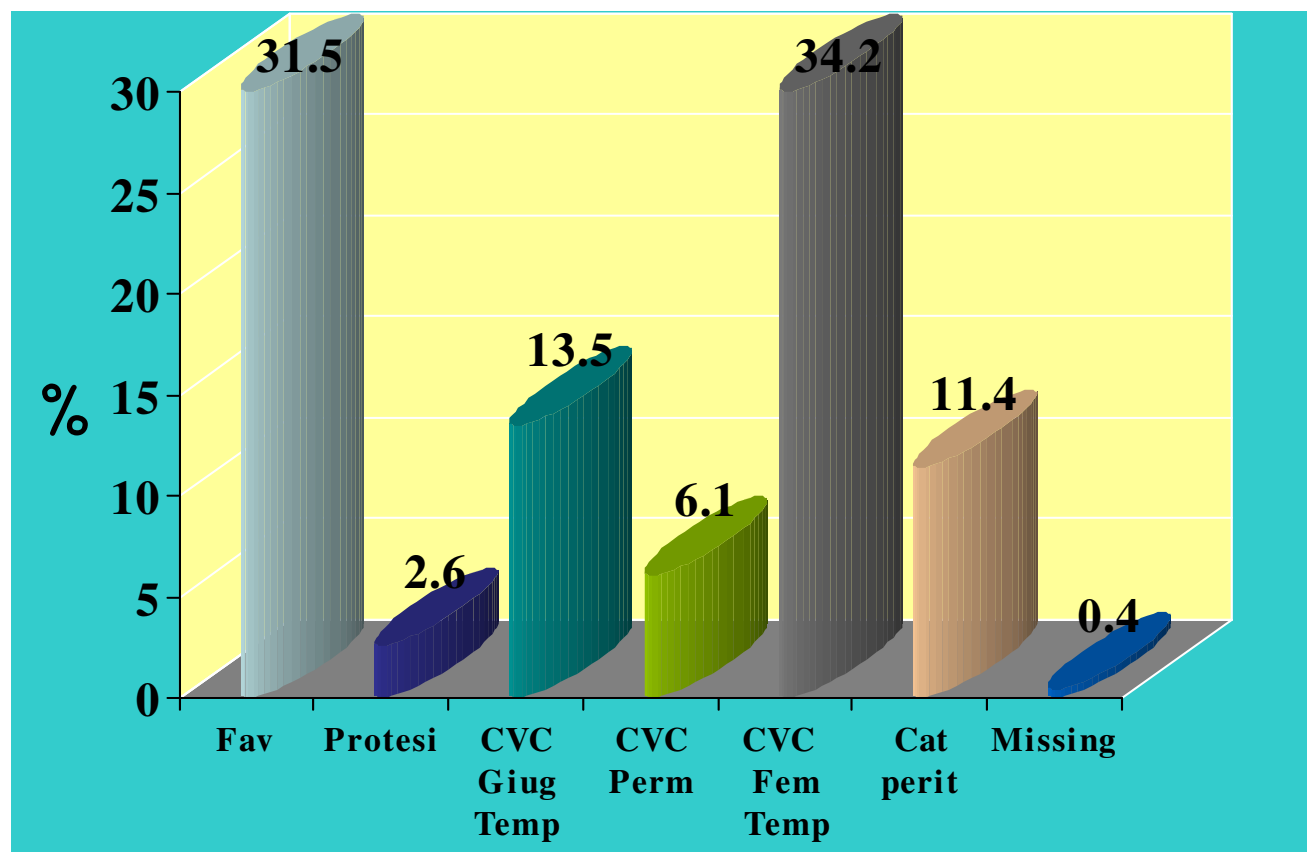


Tot comorb
inserite 508

Accesso vascolare alla prima dialisi 2010

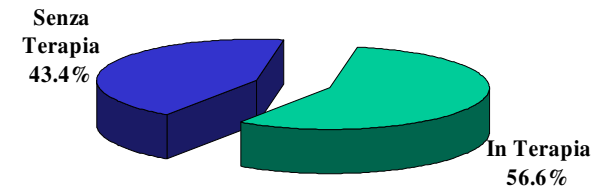


Dati 2009

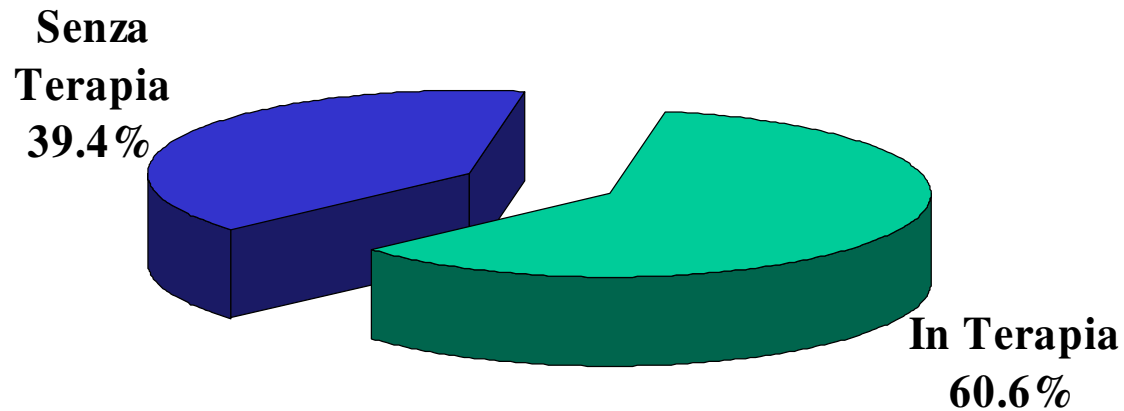


Incidenti 2010

Terapia con Epo e Darbo al primo trattamento

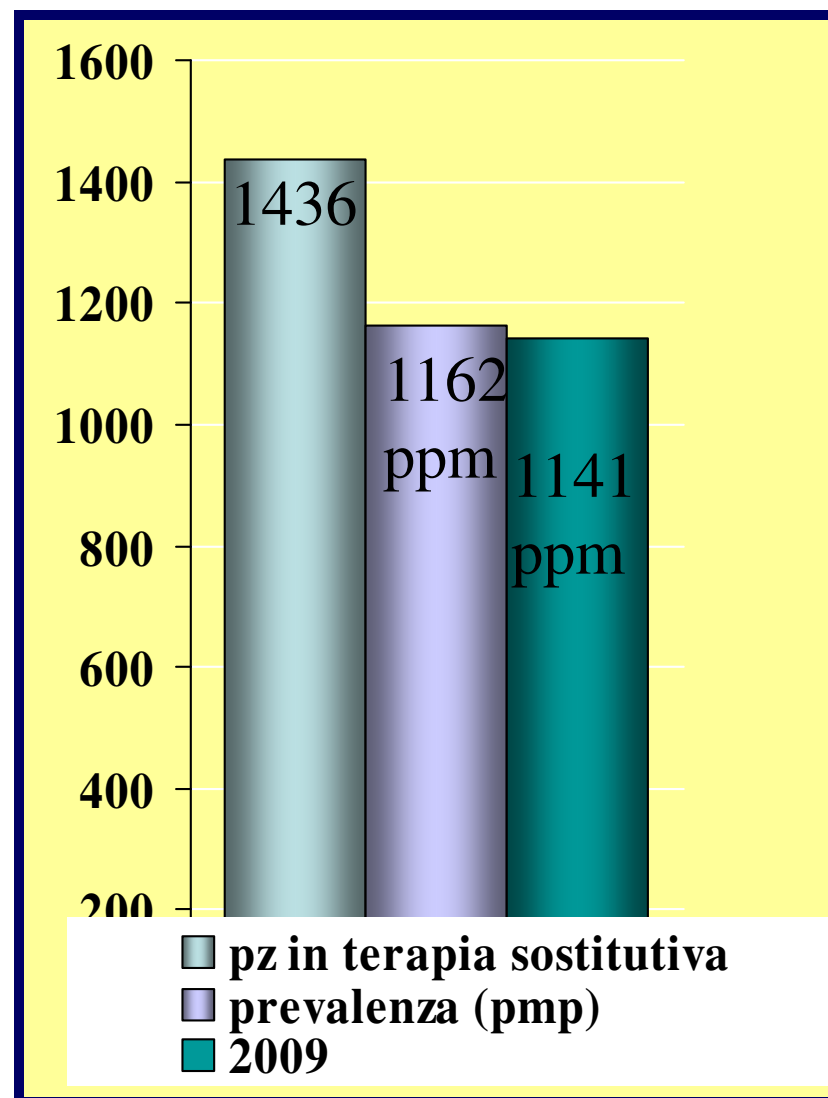


Dati 2009

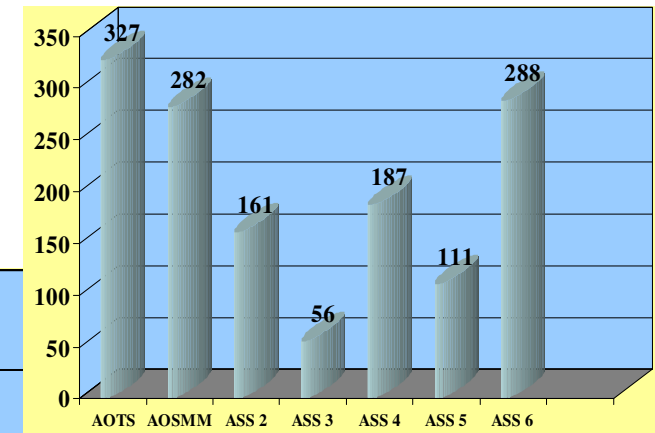
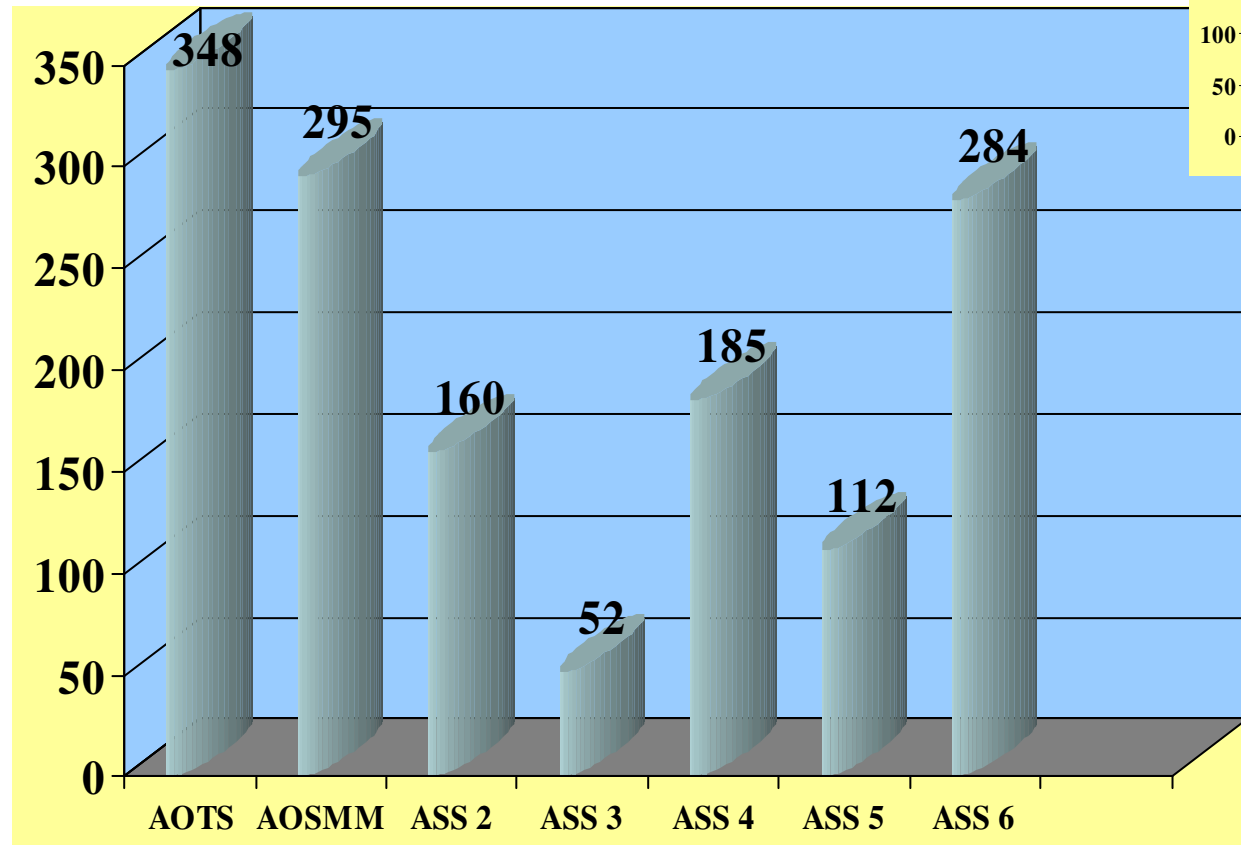


PREVALENZA terapia sostitutiva 2010

- **Al 31/12/2010:**
nel Friuli VG vi
erano 1436
pazienti in terapia
sostitutiva renale .



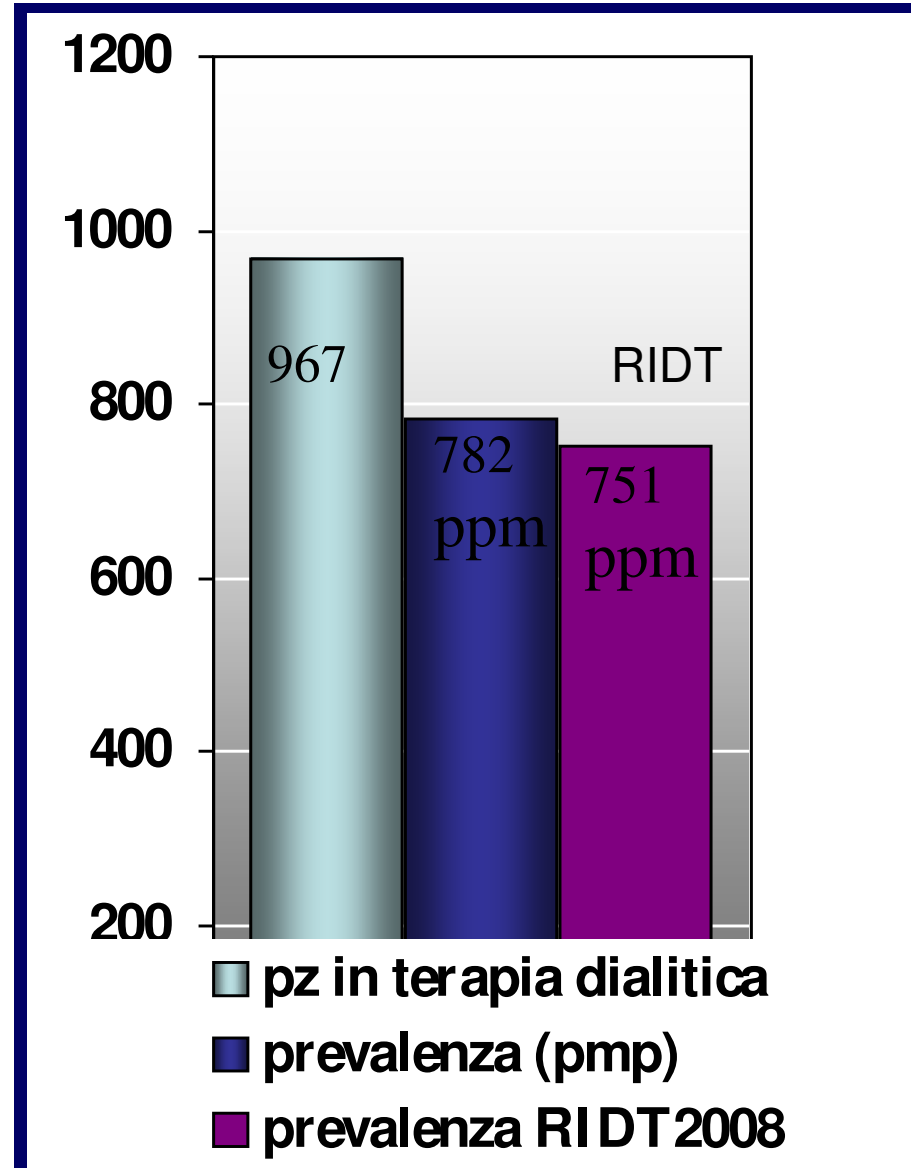
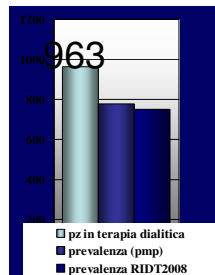
Distribuzione Pazienti prevalenti 2010 per Azienda



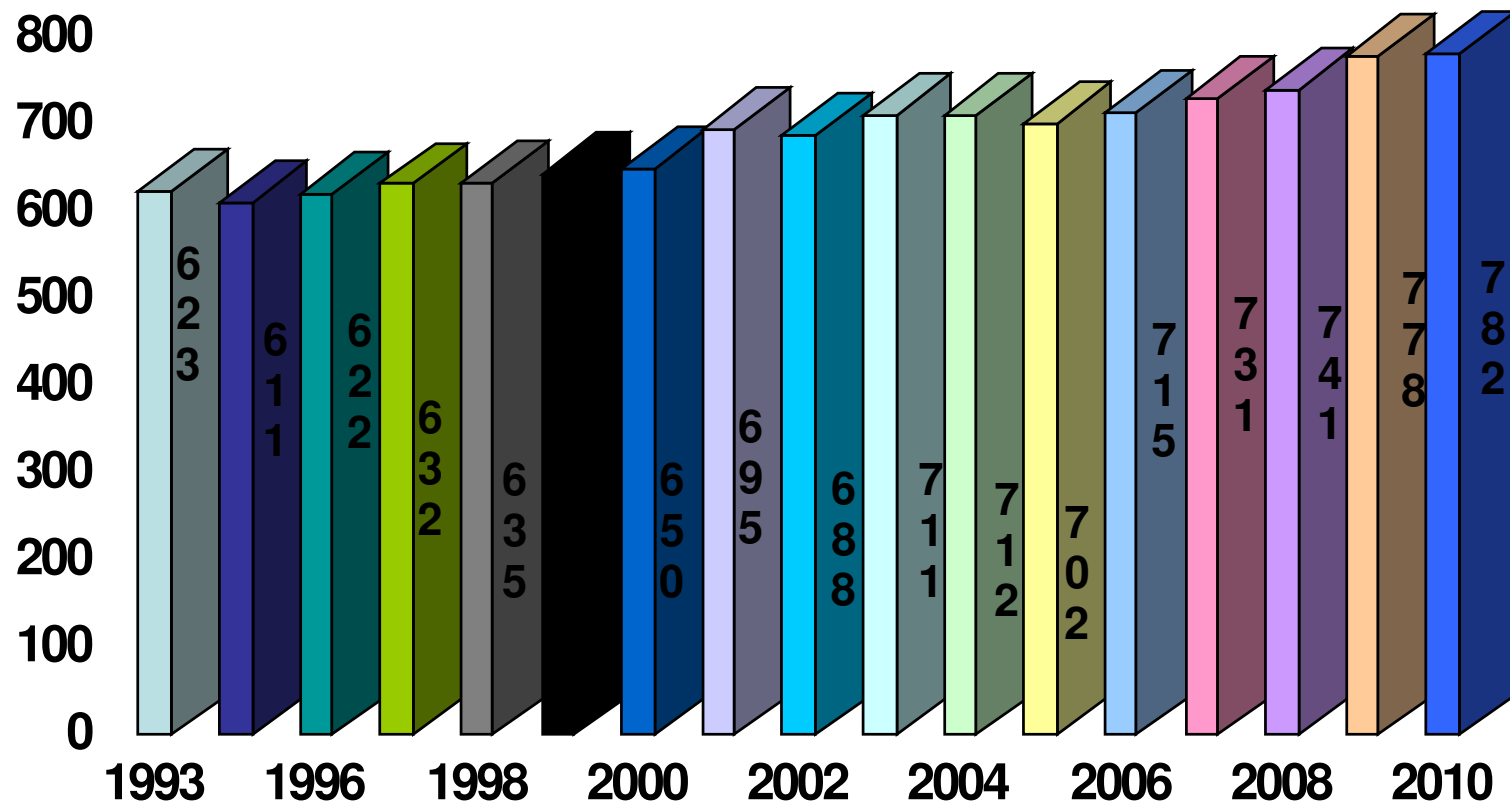
Dati 2009

PREVALENTI 2010 in trattamento dialitico

- **Al 31/12/2010:**
nel Friuli VG vi
erano 967 pazienti
in terapia
sostitutiva dialitica

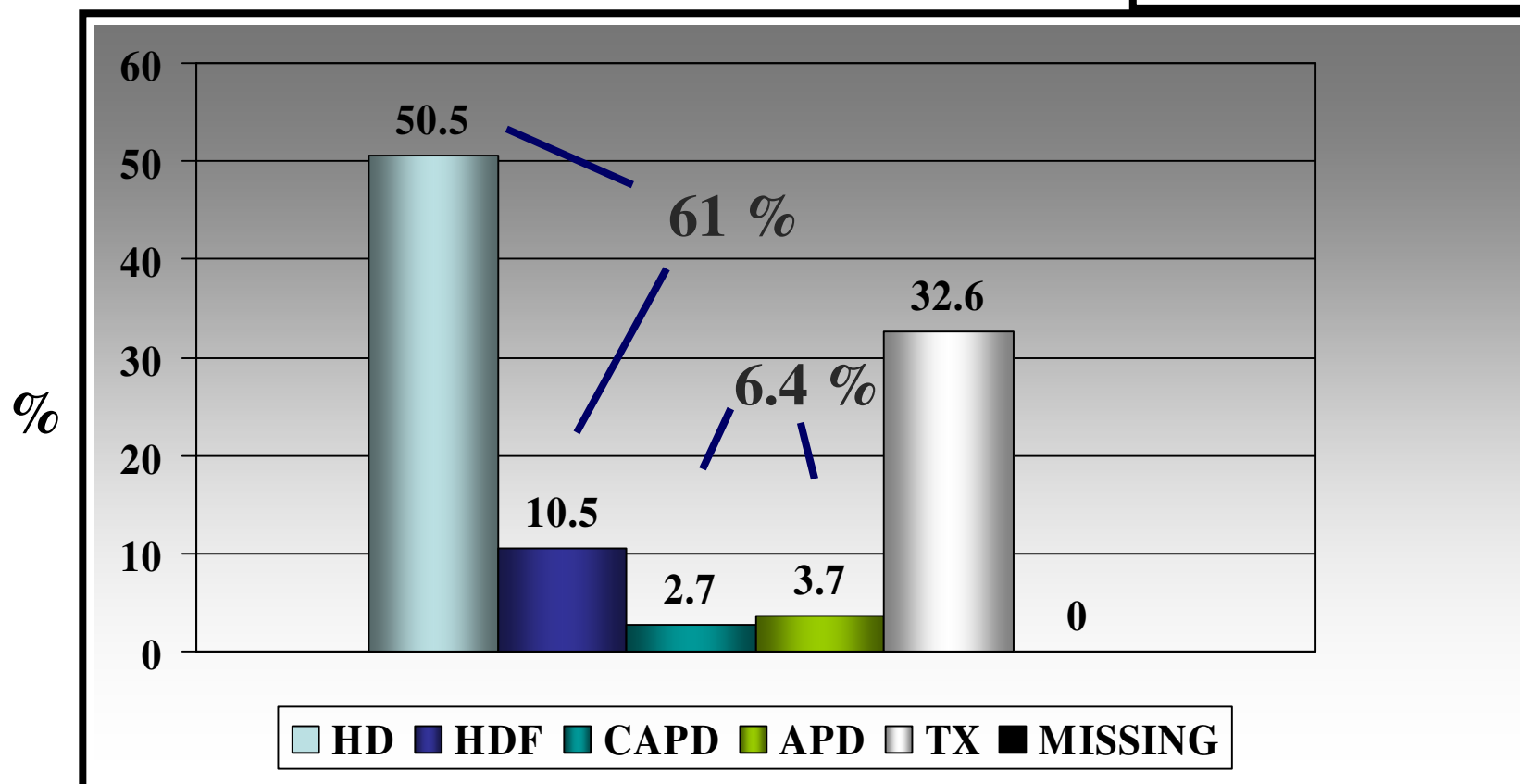
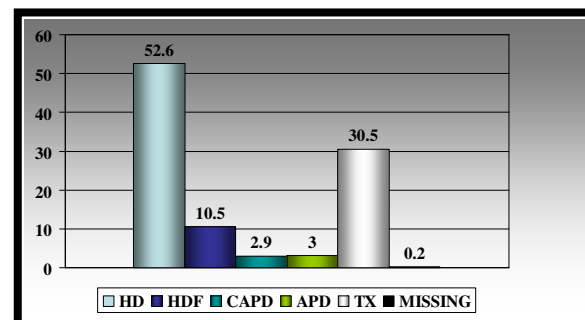


Pz in dialisi per milione abitanti

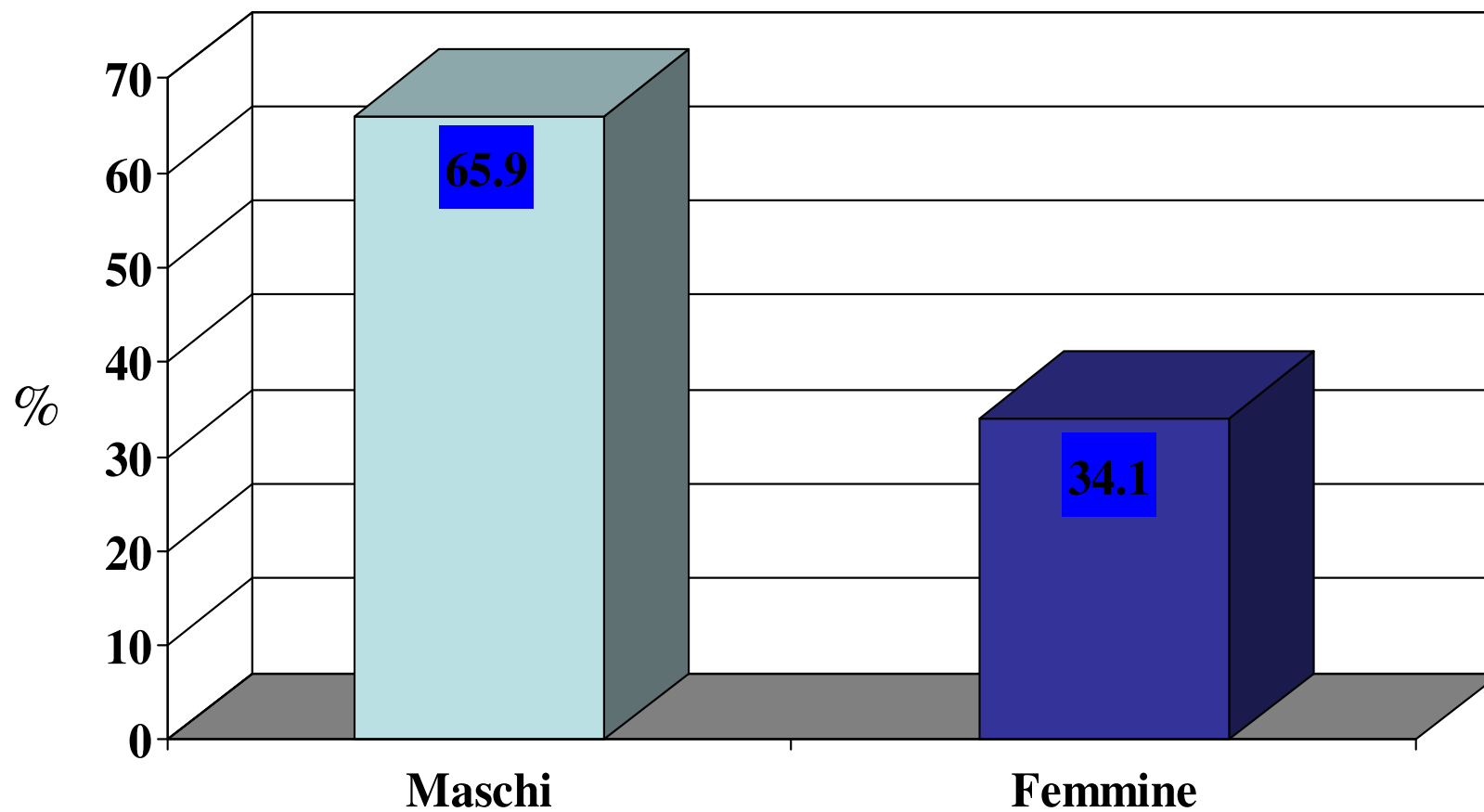


Prevalenti 2010 per tipo trattamento

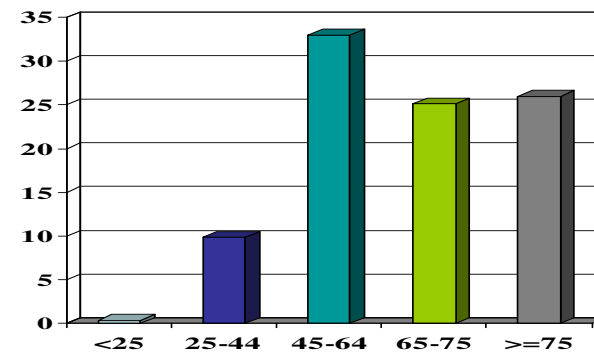
Dati 2009



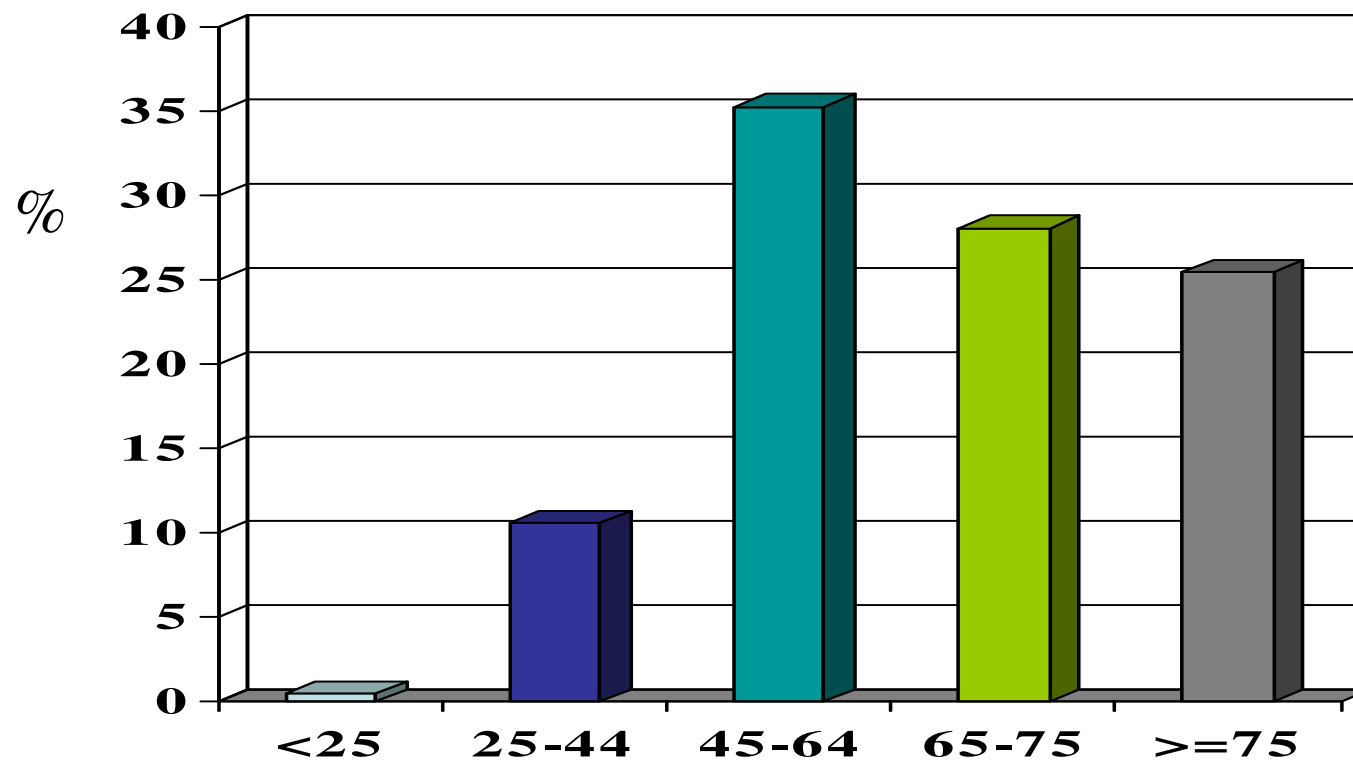
Prevalenti 2010 per sesso



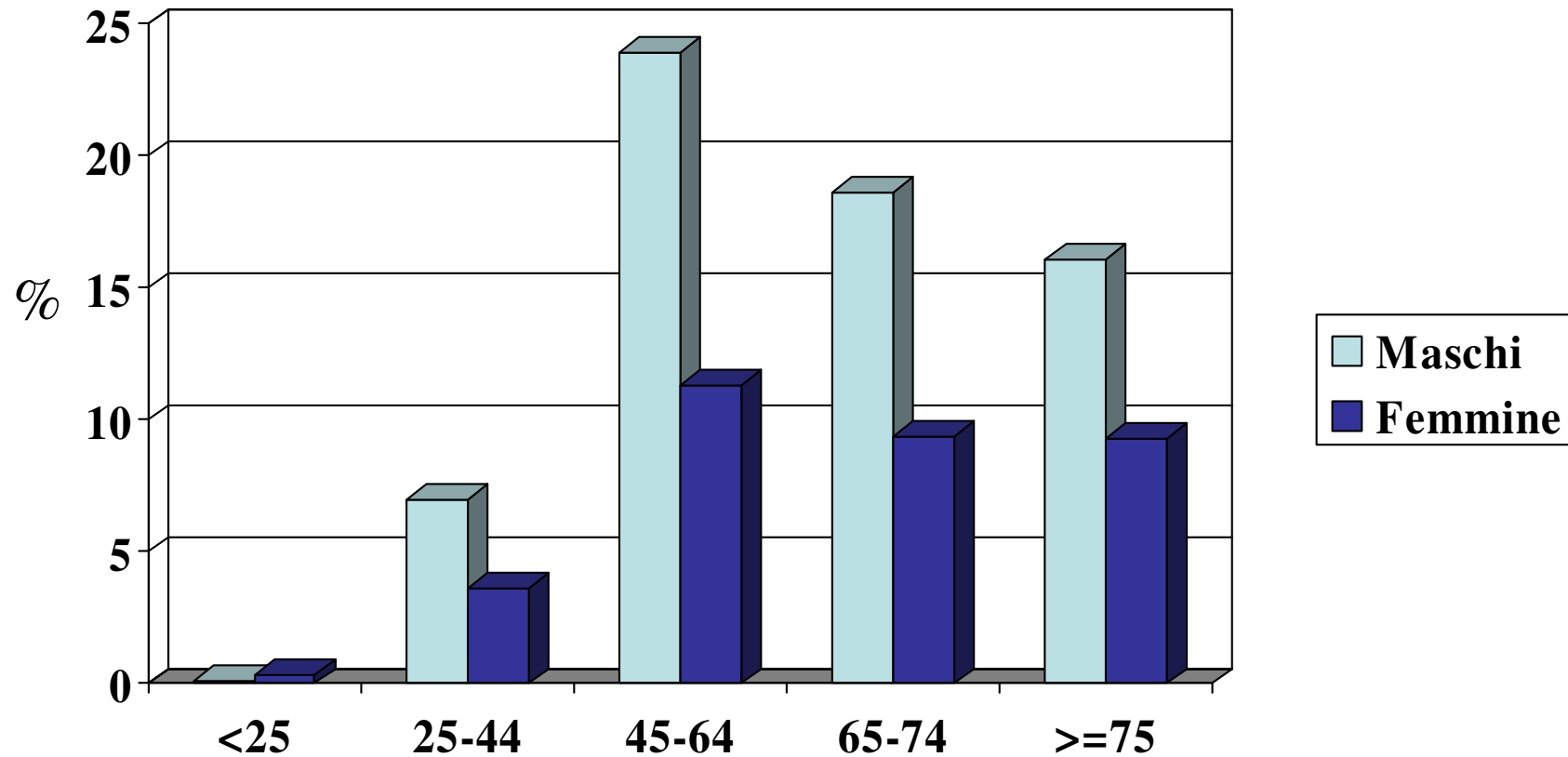
Prevalenti terapia sostitutiva 2010 per classe di età



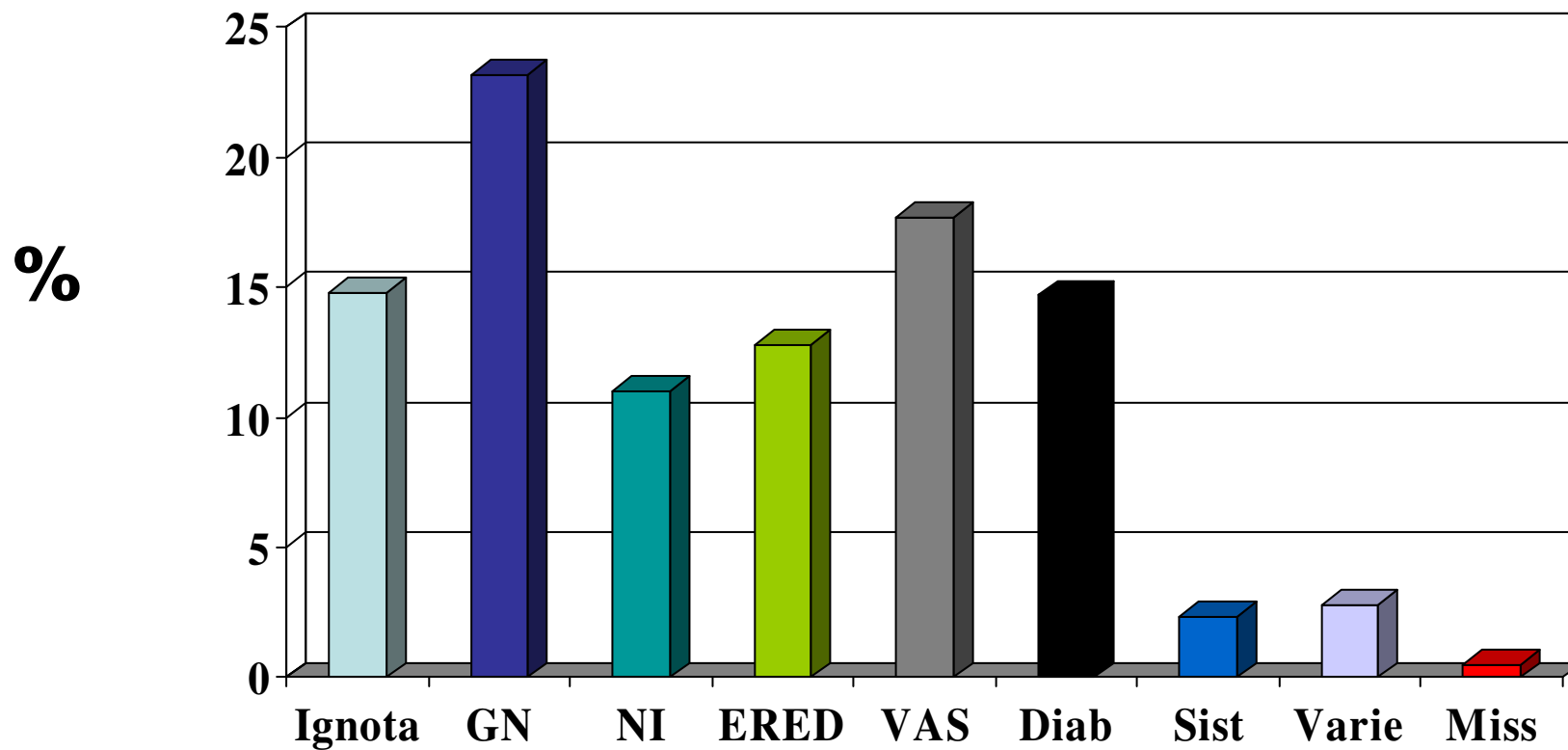
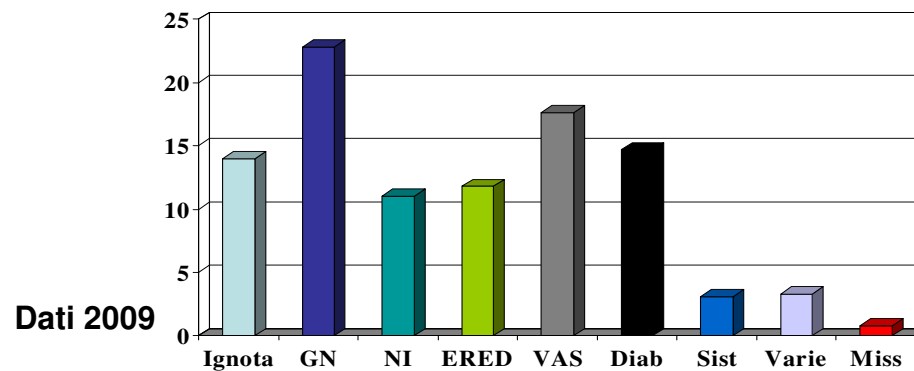
Dati 2009



Prevalenti 2010 per sesso e classe di età

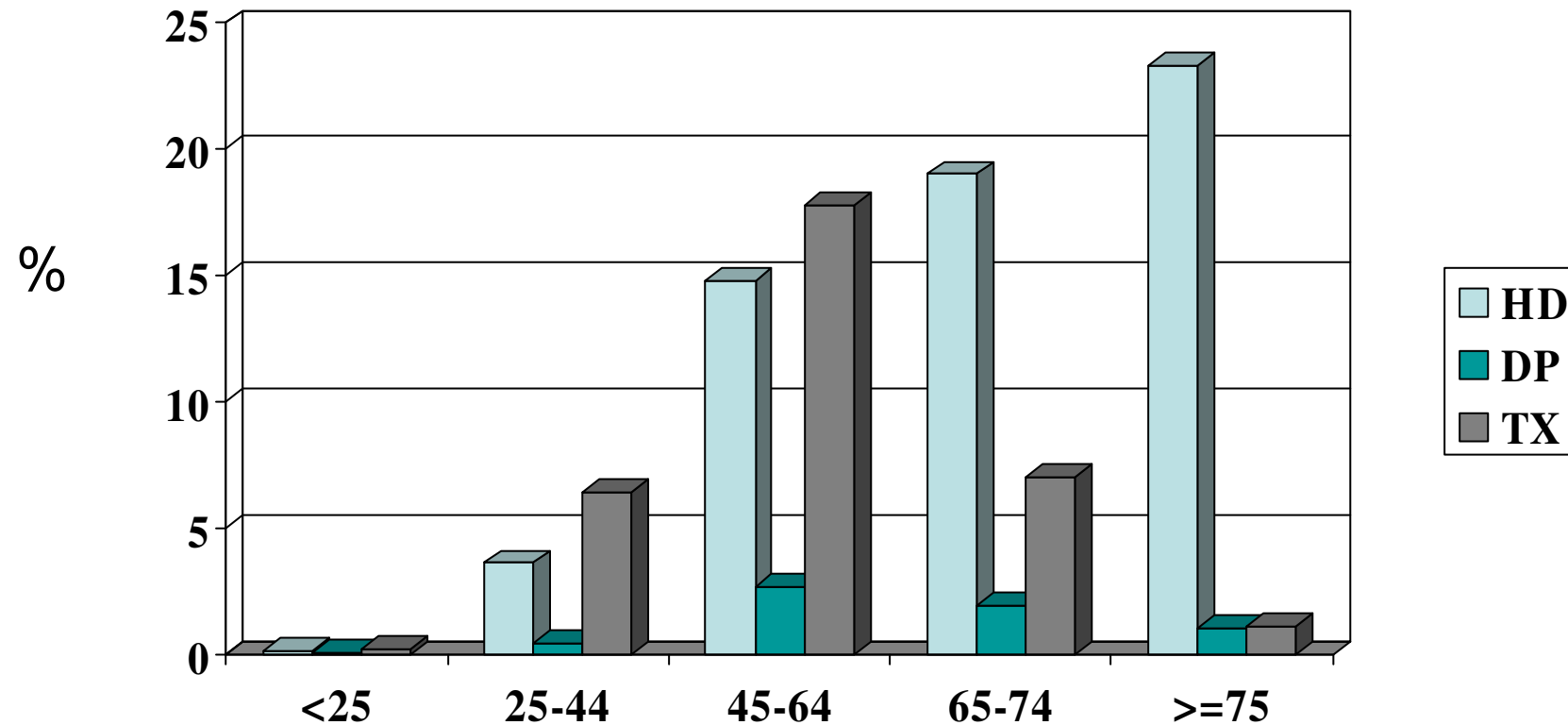


Prevalenti 2010 per classe di nefropatia



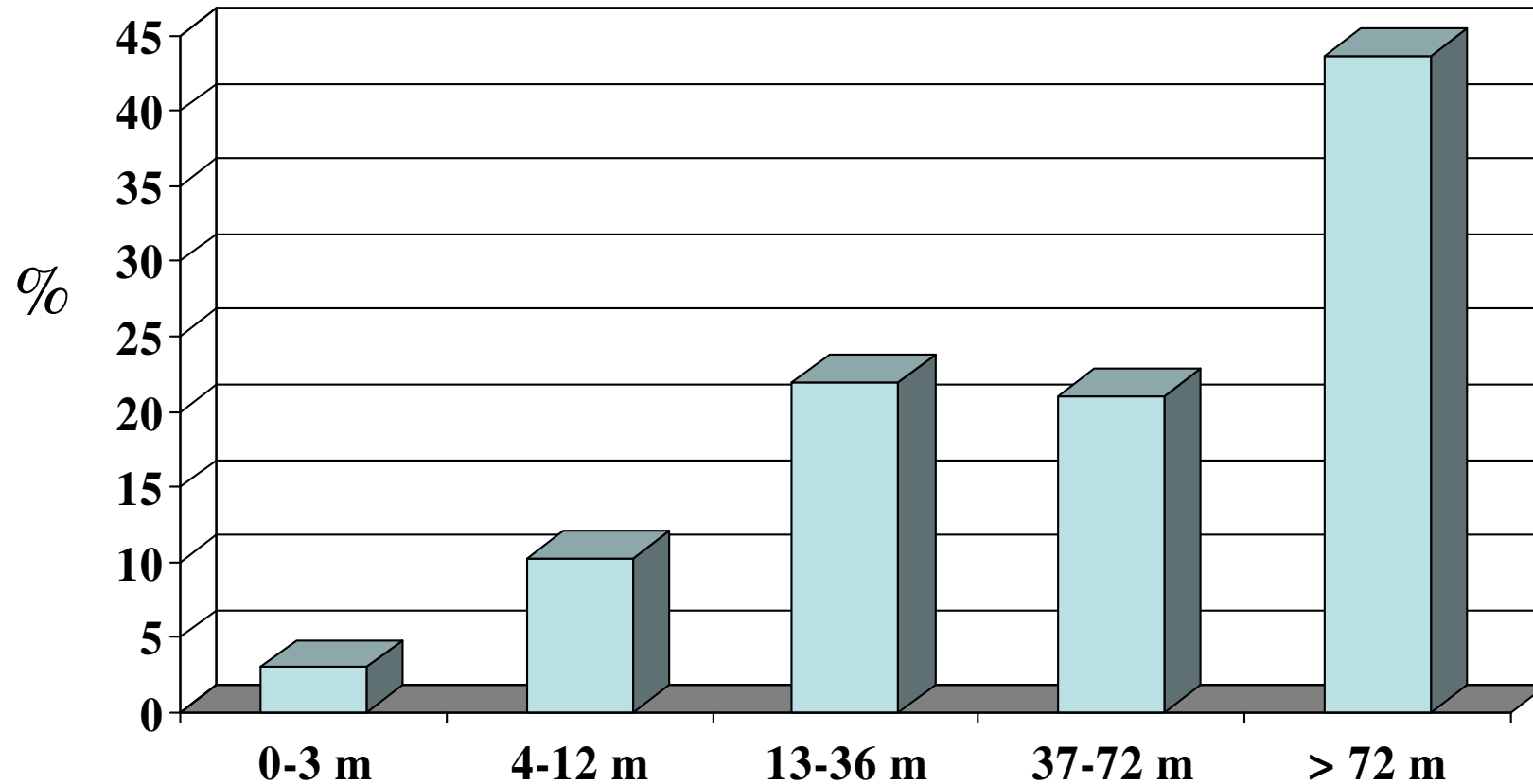
Prevalenti 2010

per tipo di trattamento e classe di eta'



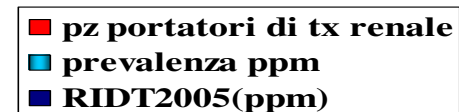
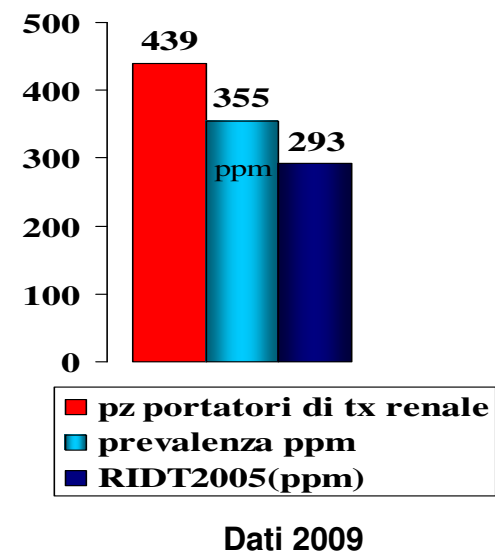
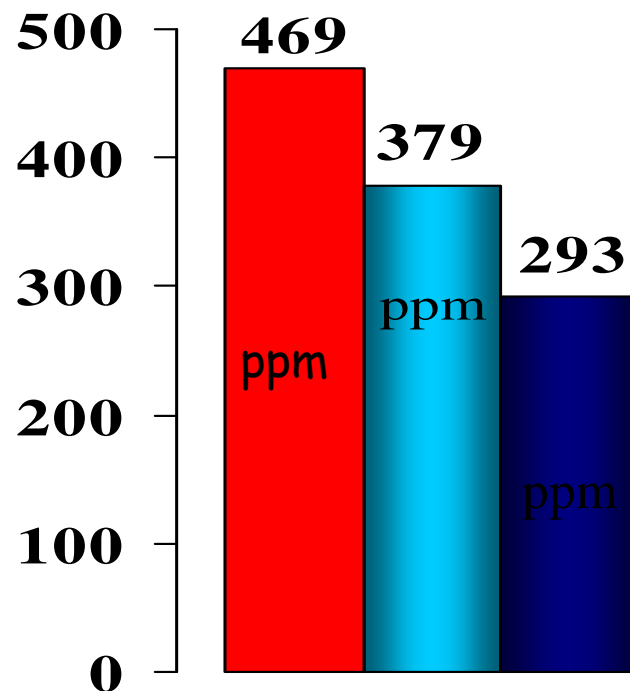
Prevalenti 2010

distribuzione per durata trattamento

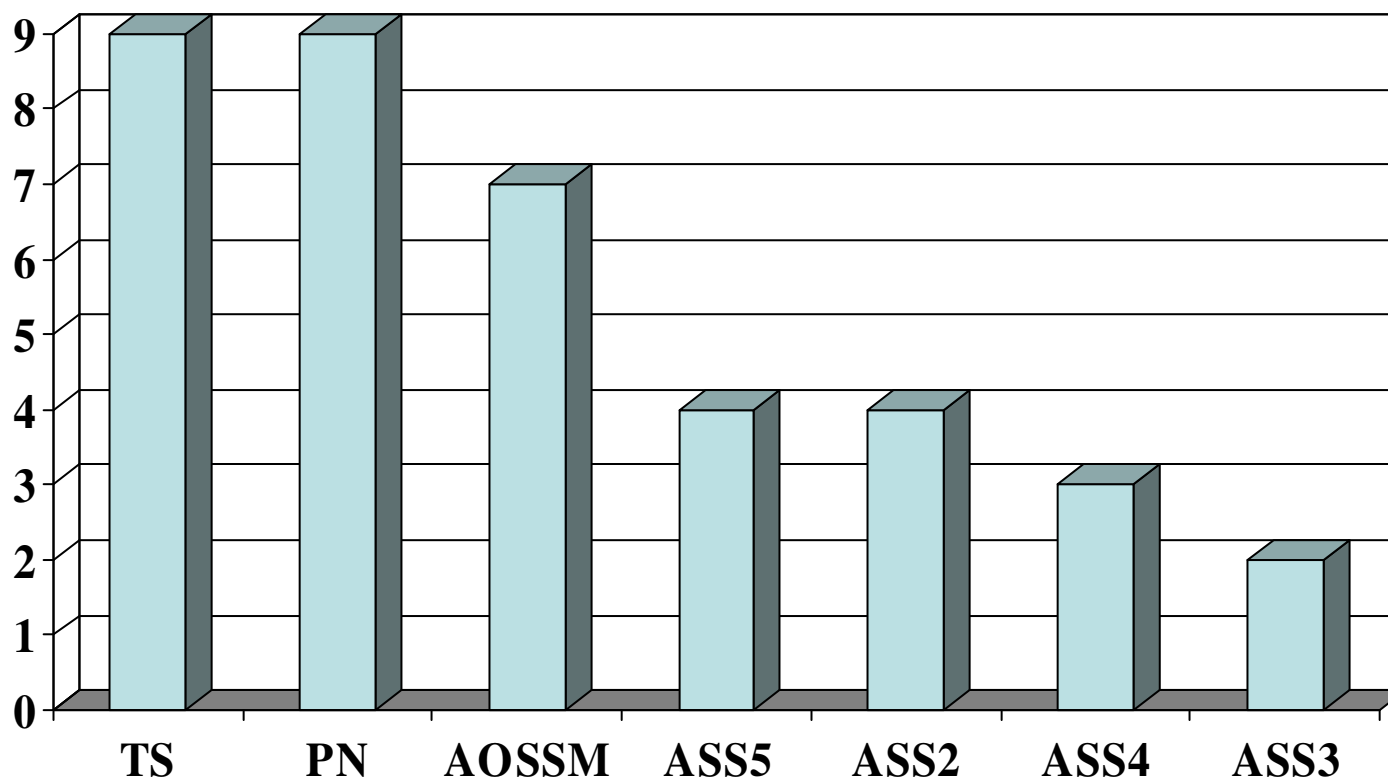


PREVALENTI 2010 TRAPIANTO

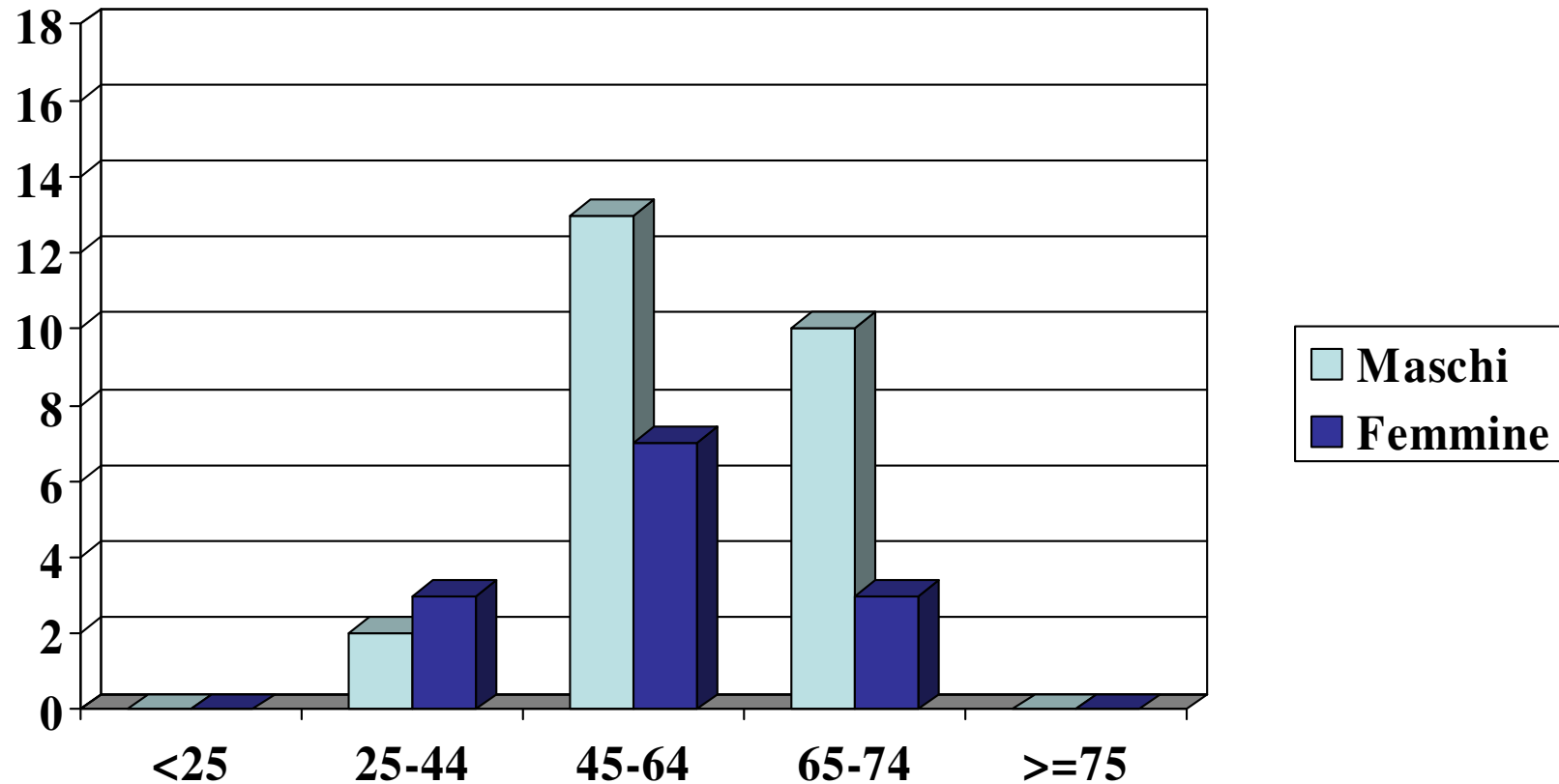
- **Al 31/12/2010:**
nel Friuli VG vi
erano **469**
pazienti portatori
di trapianto
renale



Trapianti 2010 provenienza del paziente dai vari Centri



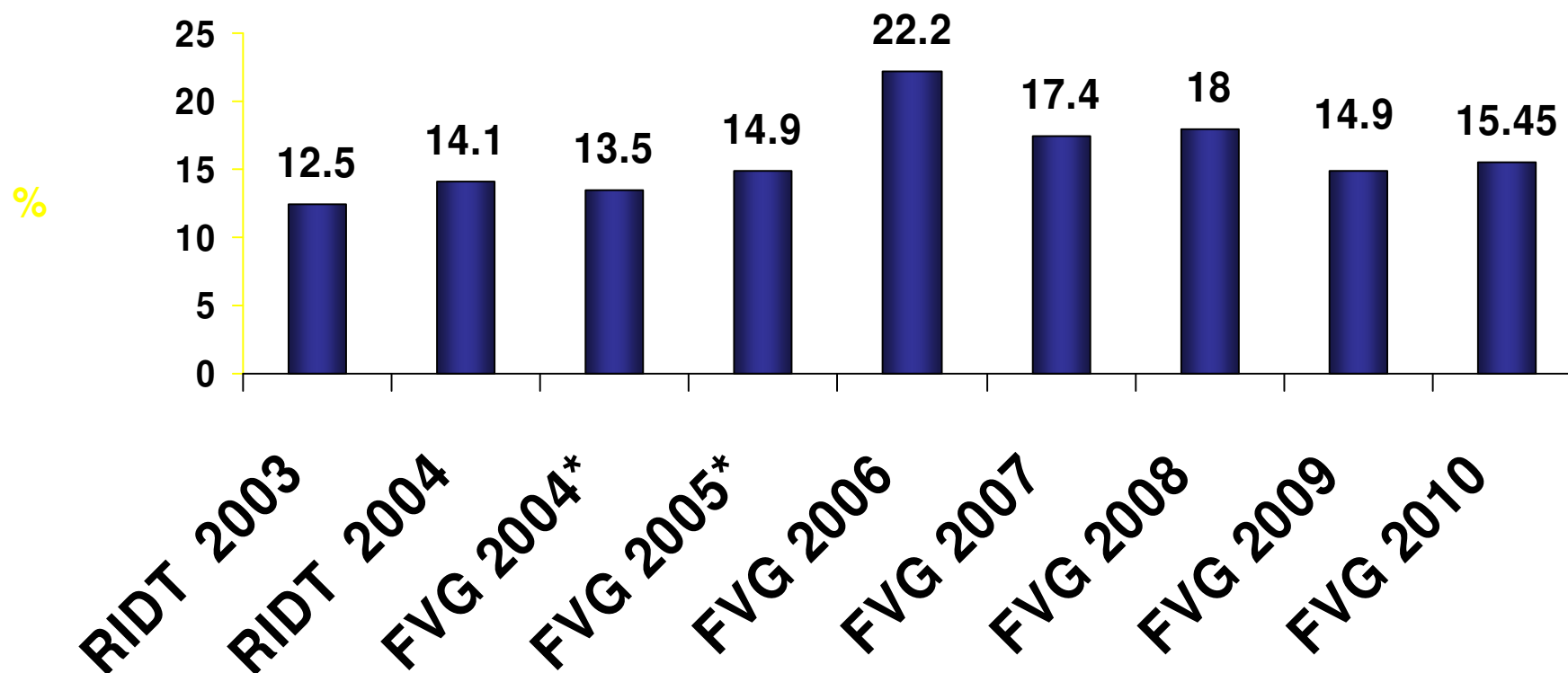
Trapianti 2010 per sesso e classe di età



Tasso di mortalità 2010

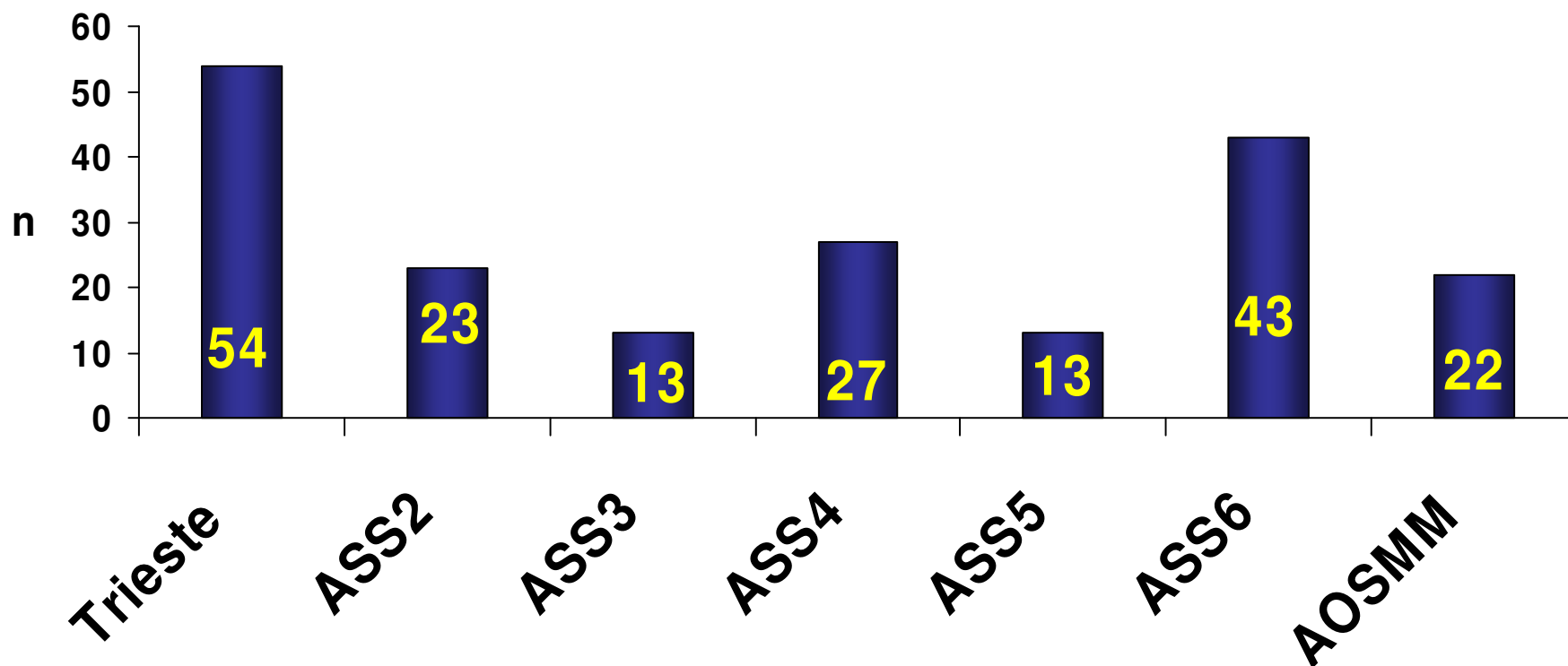
- I decessi del 2010 sono risultati 195
- Il tasso di mortalità nei pazienti in trattamento dialitico nel 2010 è risultato pari al 15.45 %
- Il tasso di mortalità nei pazienti in terapia sostitutiva nel 2008 è risultato pari al 11.69 %

Tasso di mortalità pazienti in Dialisi

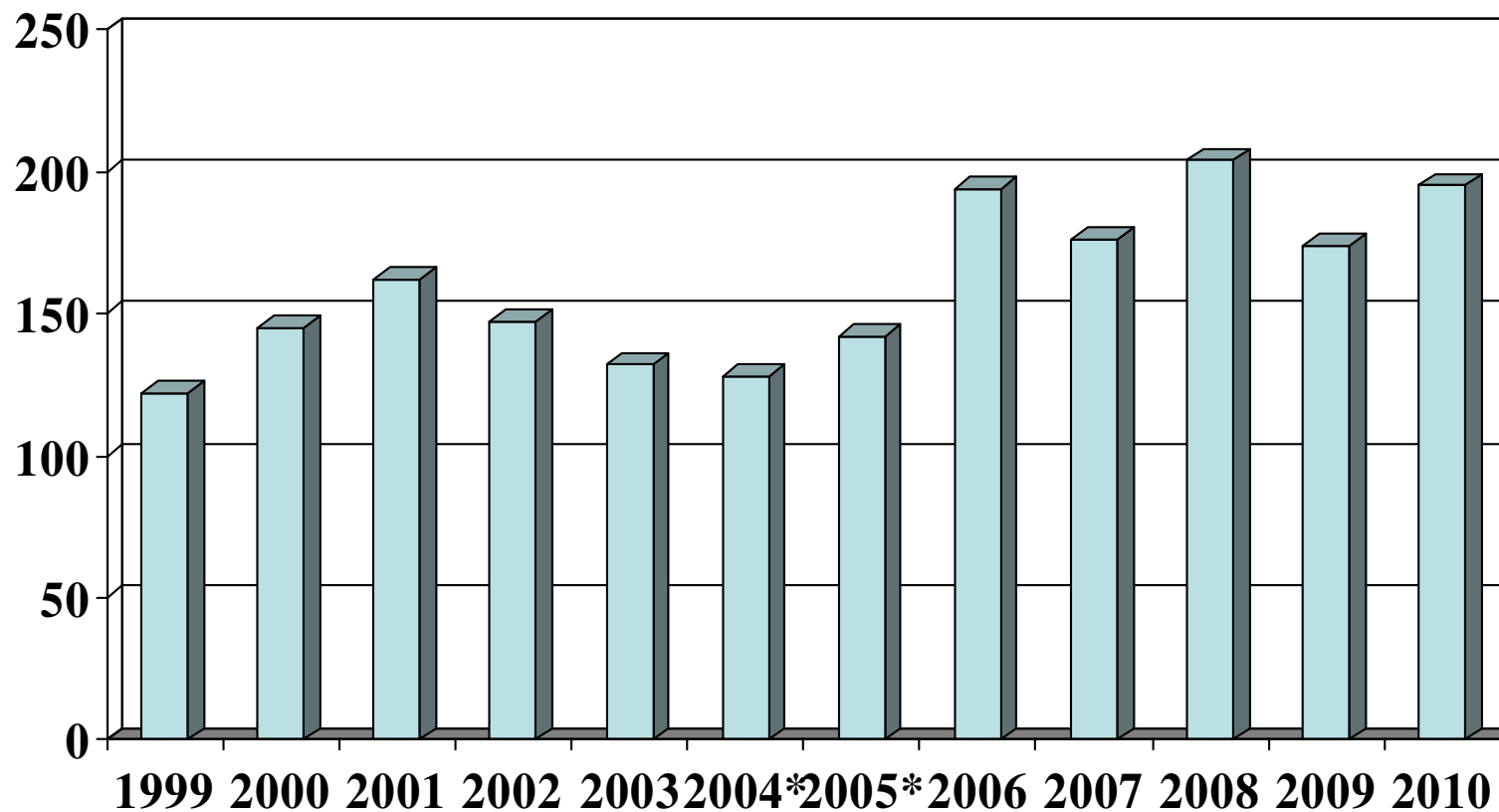


* Dati senza ASS5

Mortalità 2010 per singole Aziende



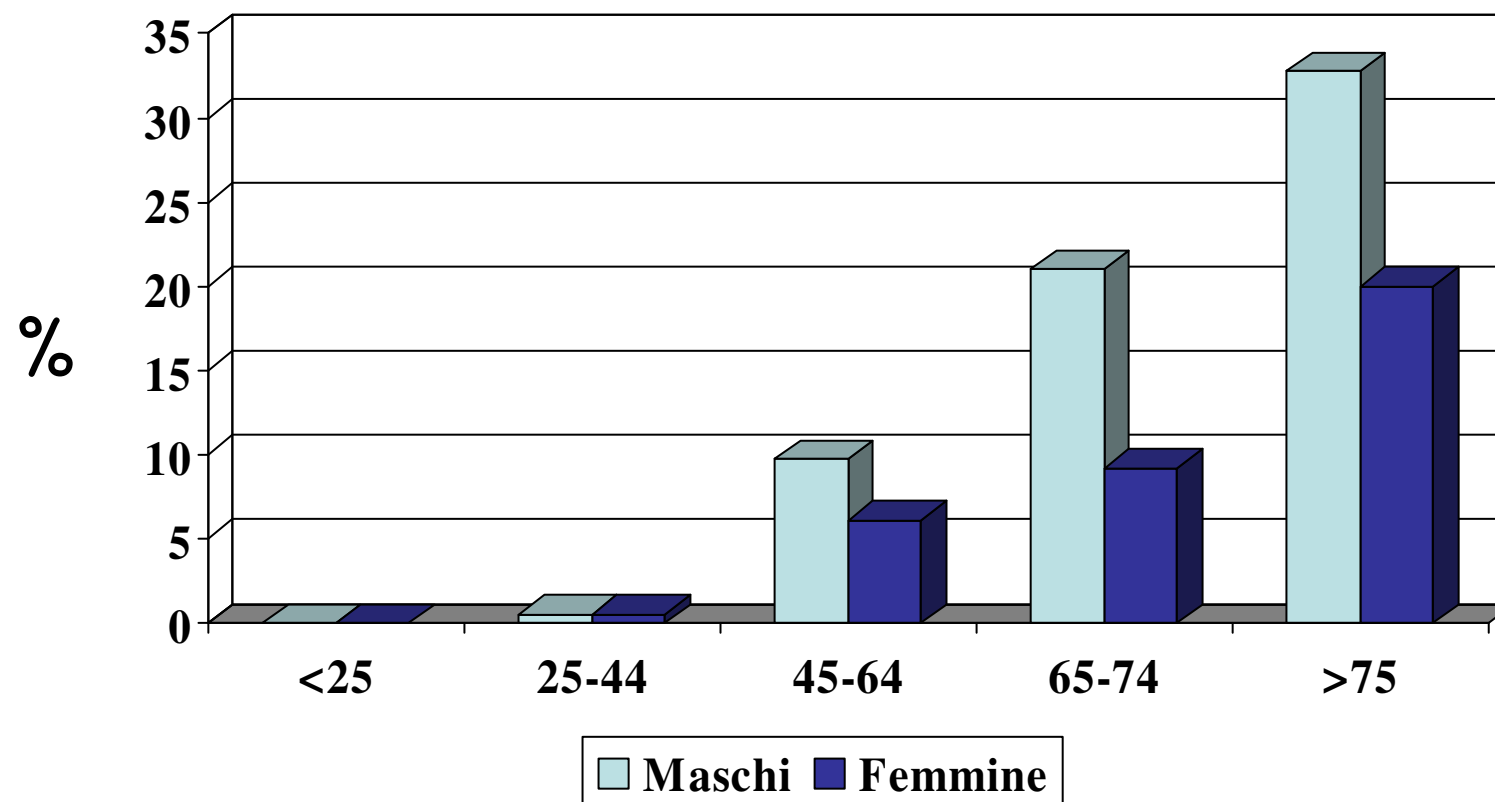
Andamento decessi



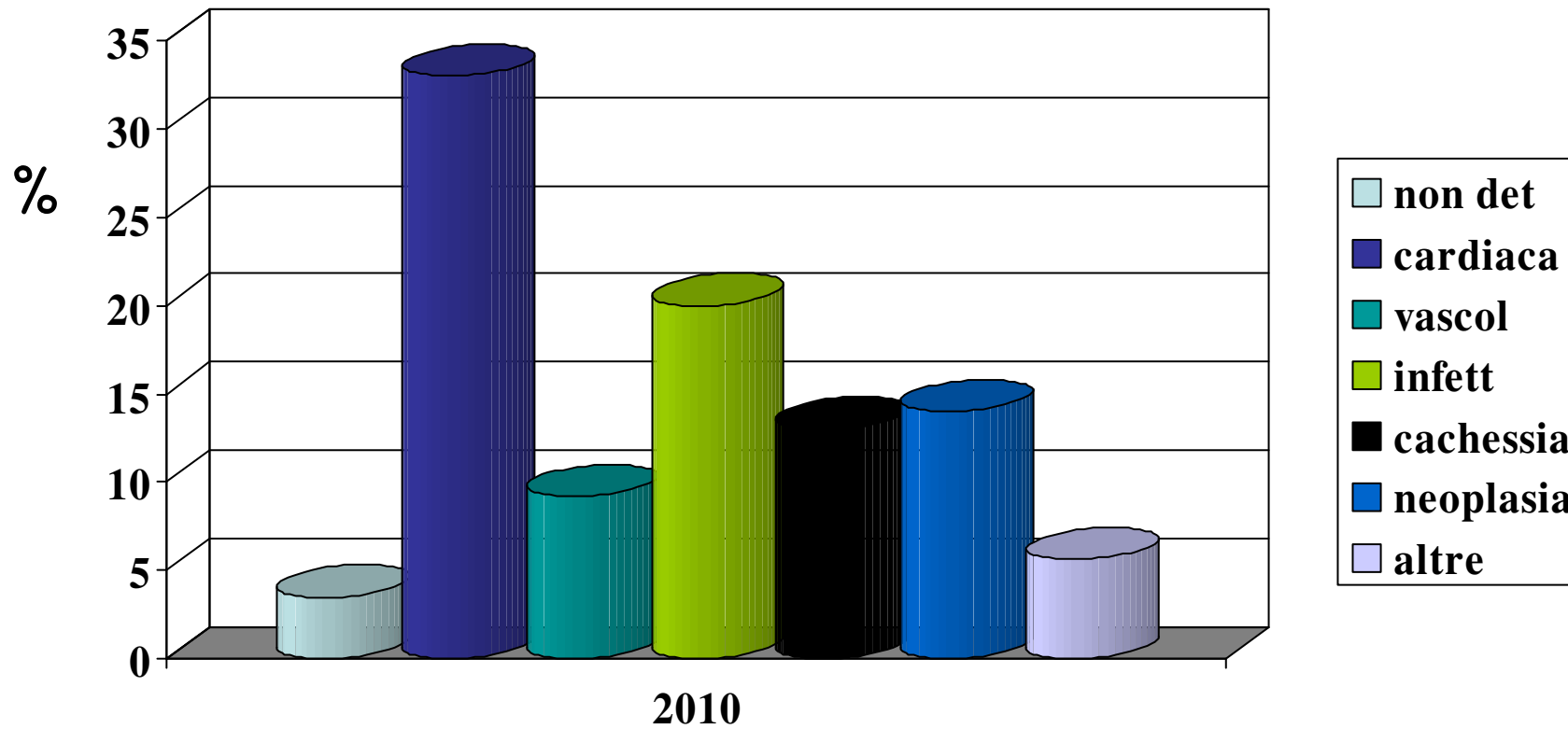
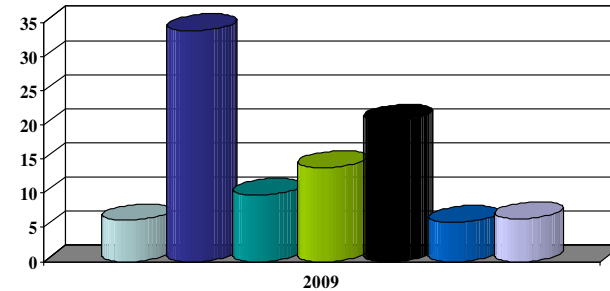
* Dati senza ASS5

Decessi 2010

per sesso e classe di età



Decessi 2010 per cause di decesso



Decessi 2010 per causa di decesso e classe di età

